

[KD Validated] TFEB Rabbit mAb

Catalog No.: A25981 **Recombinant**

Basic Information

Observed MW

65-70kDa

Calculated MW

44kDa/53kDa

Category

Primary antibody

Applications

WB, IHC-P, ELISA, CHIP

Cross-Reactivity

Human, Mouse, Rat

CloneNo number

ARC68094

Background

Enables DNA-binding transcription factor activity; enzyme binding activity; and transcription cis-regulatory region binding activity. Involved in several processes, including cellular response to amino acid starvation; lysosome localization; and positive regulation of autophagy. Located in cytosol; lysosomal membrane; and nucleoplasm.

Recommended Dilutions

WB 1:1000 - 1:2000

IHC-P 1:200 - 1:800

ELISA Recommended starting concentration is 1 µg/mL. Please optimize the concentration based on your specific assay requirements.

ChIP 5µg antibody for 10µg-15µg of Chromatin

Immunogen Information

Gene ID

7942

Swiss Prot

P19484

Immunogen

Recombinant protein (or fragment). This information is considered to be commercially sensitive.

Synonyms

TCFEB; BHLHE35; ALPHATFEB

Contact

☎ | 400-999-6126

✉ | cn.market@abclonal.com.cn

🌐 | www.abclonal.com.cn

Product Information

Source

Rabbit

Isotype

IgG

Purification

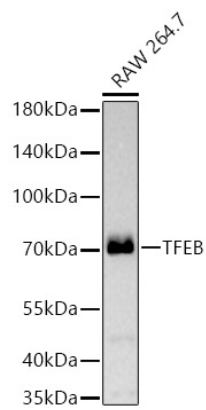
Affinity purification

Storage

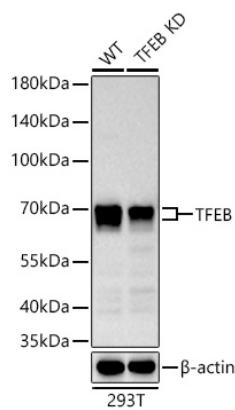
Store at -20°C. Avoid freeze / thaw cycles.

Buffer: PBS containing 50% glycerol and 0.05% BSA, preserved with proclin300 or sodium azide (as specified on the Certificate of Analysis), pH 7.3.

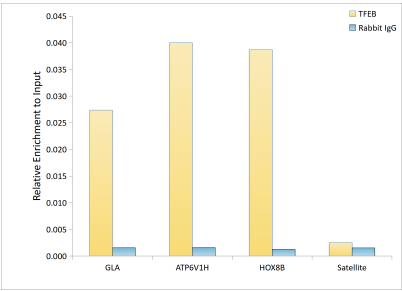
Validation Data



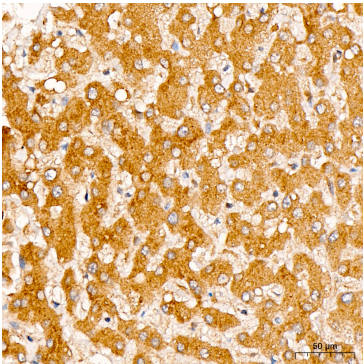
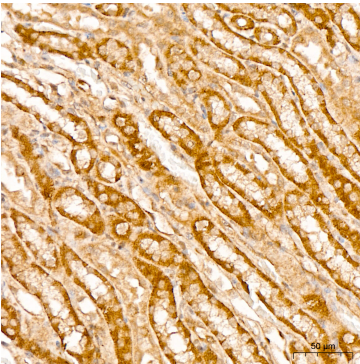
Western blot analysis of lysates from RAW 264.7 cells using [KD Validated] TFEB Rabbit mAb (A25981) at 1:1000 dilution incubated overnight at 4°C.
Secondary antibody: HRP-conjugated Goat anti-Rabbit IgG (H+L) (AS014) at 1:10000 dilution.
Lysates/proteins: 25 µg per lane.
Blocking buffer: 3% nonfat dry milk in TBST.
Detection: ECL Basic Kit (RM00020).
Exposure time: 45s.



Western blot analysis of lysates from wild type (WT) and TFEB knockdown (KD) 293T cells using [KD Validated] TFEB Rabbit mAb (A25981) at 1:1000 dilution incubated overnight at 4°C.
Secondary antibody: HRP-conjugated Goat anti-Rabbit IgG (H+L) (AS014) at 1:10000 dilution.
Lysates/proteins: 25 µg per lane.
Blocking buffer: 3% nonfat dry milk in TBST.
Detection: ECL Basic Kit (RM00020).
Exposure time: 90s.



Chromatin immunoprecipitation was performed with 15 µg of cross-linked chromatin from Raji cells treated by Torin-1 (250nM, 5h), using 5 µg of [KD Validated] TFEB Rabbit mAb (A25981) and Rabbit IgG isotype control (AC042). The enrichment of immunoprecipitated DNA at different genomic loci was examined by quantitative PCR. The histogram compares the ratio of the immunoprecipitated DNA to the input at given loci.



Validation Data

Immunohistochemistry analysis of paraffin-embedded Rat kidney tissue using [KD Validated] TFEB Rabbit mAb (A25981) at a dilution of 1:200 (40x lens). High pressure antigen retrieval performed with 0.01M Citrate Buffer (pH 6.0) prior to IHC staining.

Immunohistochemistry analysis of paraffin-embedded Human liver tissue using [KD Validated] TFEB Rabbit mAb (A25981) at a dilution of 1:200 (40x lens). High pressure antigen retrieval performed with 0.01M Citrate Buffer (pH 6.0) prior to IHC staining.