

GATA3 Rabbit mAb

Catalog No.: A25955 **Recombinant**

Basic Information

Observed MW

50kDa

Calculated MW

48kDa

Category

Primary antibody

Applications

WB,IF/ICC,FC (intra),ELISA

Cross-Reactivity

Human

CloneNo number

ARC67910

Background

This gene encodes a protein which belongs to the GATA family of transcription factors. The protein contains two GATA-type zinc fingers and is an important regulator of T-cell development and plays an important role in endothelial cell biology. Defects in this gene are the cause of hypoparathyroidism with sensorineural deafness and renal dysplasia.

Recommended Dilutions

WB 1:7000 - 1:28000

IF/ICC 1:50 - 1:200

FC (intra) 1:500 - 1:1000

ELISA Recommended starting concentration is 1 µg/mL. Please optimize the concentration based on your specific assay requirements.

Immunogen Information

Gene ID

2625

Swiss Prot

P23771

Immunogen

Recombinant protein (or fragment). This information is considered to be commercially sensitive.

Synonyms

HDR; HDRS

Contact

☎ | 400-999-6126

✉ | cn.market@abclonal.com.cn

🌐 | www.abclonal.com.cn

Product Information

Source

Rabbit

Isotype

IgG

Purification

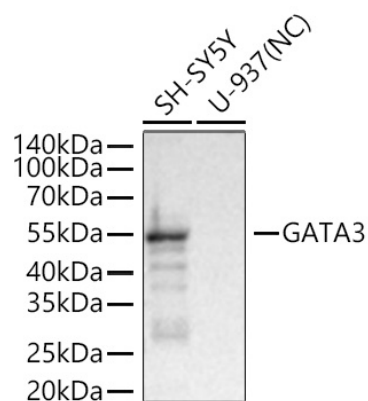
Affinity purification

Storage

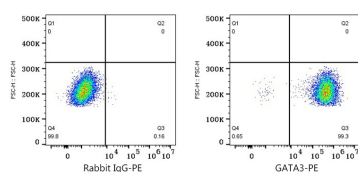
Store at -20°C. Avoid freeze / thaw cycles.

Buffer: PBS containing 50% glycerol and 0.05% BSA, preserved with proclin300 or sodium azide (as specified on the Certificate of Analysis), pH 7.3.

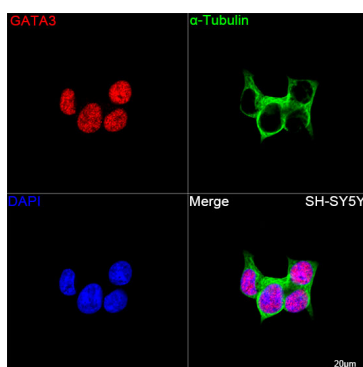
Validation Data



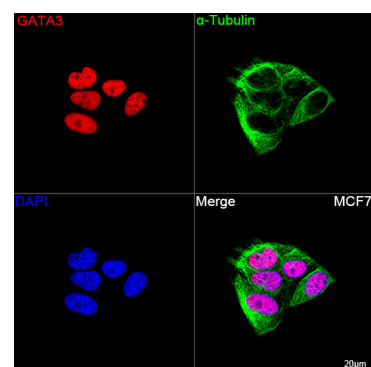
Western blot analysis of various lysates using GATA3 Rabbit mAb (A25955) at 1:7000 dilution incubated overnight at 4°C.
 Secondary antibody: HRP-conjugated Goat anti-Rabbit IgG (H+L) (AS014) at 1:10000 dilution.
 Lysates/proteins: 25 µg per lane.
 Blocking buffer: 3% nonfat dry milk in TBST.
 Detection: ECL Basic Kit (RM00020).
 Negative control (NC): U-937
 Exposure time: 1s.



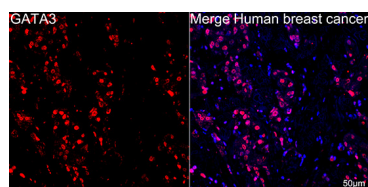
Flow cytometry: 1×10^6 MCF7 cells were intracellularly-stained with Rabbit IgG isotype control (AC042, 2 µg/mL, left) or GATA3 Rabbit mAb (A25955, 2 µg/mL, right), followed by PE conjugated Donkey anti-rabbit pAb staining.



Confocal imaging of SH-SY5Y cells using GATA3 Rabbit mAb (A25955, dilution 1:200) followed by a further incubation with Cy3 Goat Anti-Rabbit IgG (H+L) (AS007, dilution 1:500) (Red). The cells were counterstained with α-Tubulin Mouse mAb (AC012, dilution 1:400) followed by incubation with ABflo® 488-conjugated Goat Anti-Mouse IgG (H+L) Ab (AS076, dilution 1:500) (Green). DAPI was used for nuclear staining (Blue). Objective: 100x.



Confocal imaging of MCF7 cells using GATA3 Rabbit mAb (A25955, dilution 1:200) followed by a further incubation with Cy3 Goat Anti-Rabbit IgG (H+L) (AS007, dilution 1:500) (Red). The cells were counterstained with α-Tubulin Mouse mAb (AC012, dilution 1:400) followed by incubation with ABflo® 488-conjugated Goat Anti-Mouse IgG (H+L) Ab (AS076, dilution 1:500) (Green). DAPI was used for nuclear staining (Blue). Objective: 100x.



Confocal imaging of paraffin-embedded Human breast cancer tissue using GATA3 Rabbit mAb (A25955, dilution 1:200) followed by a further incubation with Cy3 Goat Anti-Rabbit IgG (H+L) (AS007, dilution 1:500) (Red). DAPI was used for nuclear staining (Blue). High pressure antigen retrieval performed with 0.01M Citrate Buffer (pH 6.0) prior to IF staining. Objective: 40x.