

ABflo® 488 Rabbit anti-Human GATA3 mAb

Catalog No.: A25945

Basic Information

Observed MW

Calculated MW

48kDa

Category

Primary antibody

Applications

FC (intra)

Cross-Reactivity

Human

CloneNo number

ARC67910

Conjugate

ABflo® 488. Ex:491nm. Em:516nm.

Background

This gene encodes a protein which belongs to the GATA family of transcription factors. The protein contains two GATA-type zinc fingers and is an important regulator of T-cell development and plays an important role in endothelial cell biology. Defects in this gene are the cause of hypoparathyroidism with sensorineural deafness and renal dysplasia.

Recommended Dilutions

FC (intra) 5 µl per 10⁶ cells in
 100 µl volume

Immunogen Information

Gene ID

2625

Swiss Prot

P23771

Immunogen

Recombinant protein (or fragment). This information is considered to be commercially sensitive.

Synonyms

HDR; HDRS

Contact

 | 400-999-6126

 | cn.market@abclonal.com.cn

 | www.abclonal.com.cn

Product Information

Source

Rabbit

Isotype

IgG

Purification

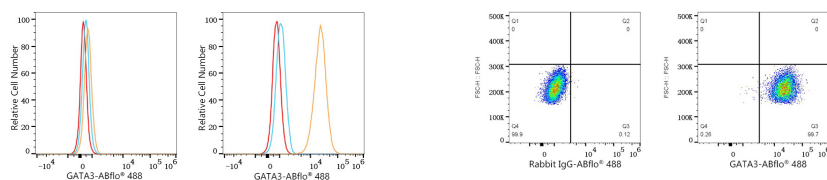
Affinity purification

Storage

Store at 2-8°C. Avoid freeze.

Buffer: PBS containing 0.2% BSA, preserved with proclin300 or sodium azide (as specified on the Certificate of Analysis), pH 7.3.

Validation Data



Flow cytometry: 1×10^6 Raji cells (negative control, left) and MCF7 cells (right) were intracellularly-stained with ABflo® 488 Rabbit anti-Human GATA3 mAb (A25945, 5 μ l/Test, orange line) or ABflo® 488 Rabbit IgG isotype control (A22069, 5 μ l/Test, blue line). Non-fluorescently stained cells were used as blank control (red line).

Flow cytometry: 1×10^6 MCF7 cells were intracellularly-stained with ABflo® 488 Rabbit IgG isotype control (A22069, 5 μ l/Test, left) or ABflo® 488 Rabbit anti-Human GATA3 mAb (A25945, 5 μ l/Test, right).