

# ABflo® 450 Rabbit anti-Mouse CD4 mAb

Catalog No.: A25941

## Basic Information

### Observed MW

### Calculated MW

51kDa

### Category

Primary antibody

### Applications

FC

### Cross-Reactivity

Mouse

### CloneNo number

ARC64069

### Conjugate

ABflo® 450. Ex:406nm. Em:445nm.

## Background

Predicted to enable several functions, including interleukin-16 binding activity; interleukin-16 receptor activity; and protein homodimerization activity. Involved in helper T cell enhancement of adaptive immune response. Acts upstream of or within several processes, including defense response to Gram-negative bacterium; positive regulation of calcium-mediated signaling; and positive regulation of peptidyl-tyrosine phosphorylation. Located in endoplasmic reticulum; external side of plasma membrane; and membrane raft. Is expressed in several structures, including alimentary system; brain; genitourinary system; hemolymphoid system; and liver and biliary system. Used to study type 1 diabetes mellitus. Human ortholog(s) of this gene implicated in immunodeficiency 79. Orthologous to human CD4 (CD4 molecule).

## Recommended Dilutions

FC 5 µl per 10<sup>6</sup> cells in  
100 µl volume

## Immunogen Information

### Gene ID

12504

### Swiss Prot

P06332

### Immunogen

Recombinant protein (or fragment). This information is considered to be commercially sensitive.

### Synonyms

L3T4; Ly-4

## Contact

☎ | 400-999-6126

✉ | [cn.market@abclonal.com.cn](mailto:cn.market@abclonal.com.cn)

🌐 | [www.abclonal.com.cn](http://www.abclonal.com.cn)

## Product Information

### Source

Rabbit

### Isotype

IgG

### Purification

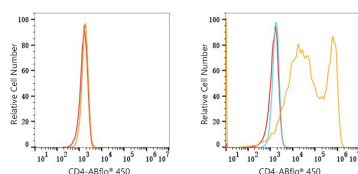
Affinity purification

### Storage

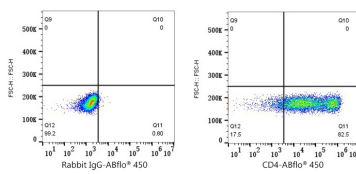
Store at 2-8°C. Avoid freeze.

Buffer: PBS containing 0.2% BSA, preserved with proclin300 or sodium azide (as specified on the Certificate of Analysis), pH 7.3.

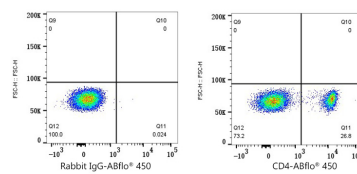
## Validation Data



Flow cytometry:  $1 \times 10^6$  293T cells (negative control, left) and 293T (Transfection, right) cells were surface-stained with ABflo® 450 Rabbit anti-Mouse CD4 mAb (A25941, 5 µl/Test, orange line) or ABflo® 450 Rabbit IgG isotype control (5 µl/Test, blue line). Non-fluorescently stained cells were used as blank control (red line).



Flow cytometry:  $1 \times 10^6$  293T (Transfection) cells were surface-stained with ABflo® 450 Rabbit IgG isotype control (5 µl/Test, left) or ABflo® 450 Rabbit anti-Mouse CD4 mAb (A25941, 5 µl/Test, right).



Flow cytometry:  $1 \times 10^6$  C57BL/6 Splenocytes cells were surface-stained with ABflo® 450 Rabbit IgG isotype control (A24173, 5 µl/Test, left) or ABflo® 450 Rabbit anti-Mouse CD4 mAb (A25941, 5 µl/Test, right).