

ABflo® 488 Rabbit anti-Mouse CD162/PSGL-1 mAb

Catalog No.: A25940

Basic Information

Observed MW

Calculated MW

44kDa

Category

Primary antibody

Applications

FC

Cross-Reactivity

Mouse

CloneNo number

ARC66571

Conjugate

ABflo® 488. Ex:491nm. Em:516nm.

Recommended Dilutions

FC 5 µl per 10⁶ cells in
100 µl volume

Background

Involved in leukocyte adhesive activation. Acts upstream of or within leukocyte tethering or rolling. Predicted to be located in plasma membrane raft and uropod. Predicted to be active in plasma membrane. Is expressed in brain and thymus primordium. Human ortholog(s) of this gene implicated in carotid artery disease. Orthologous to human SELPLG (selectin P ligand).

Immunogen Information

Gene ID

20345

Swiss Prot

Q3TA56

Immunogen

Recombinant protein (or fragment). This information is considered to be commercially sensitive.

Synonyms

CD162; Psgl1; Selp1; Selpl; Psgl-1

Contact

☎ | 400-999-6126

✉ | cn.market@abclonal.com.cn

🌐 | www.abclonal.com.cn

Product Information

Source

Rabbit

Isotype

IgG

Purification

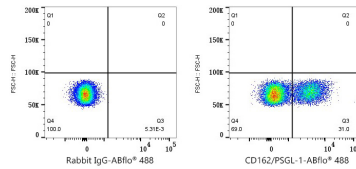
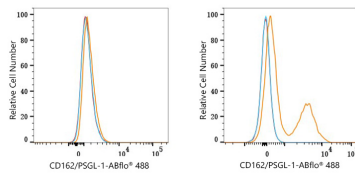
Affinity purification

Storage

Store at 2-8°C. Avoid freeze.

Buffer: PBS containing 0.2% BSA, preserved with proclin300 or sodium azide (as specified on the Certificate of Analysis), pH 7.3.

Validation Data



Flow cytometry: 1X10⁶ NIH/3T3 cells (negative control, left) and C57BL/6 mouse splenocytes cells (right) were surface-stained with ABflo® 488 Rabbit anti-Mouse CD162/PSGL-1 mAb (A25940,5 µl/Test, orange line) or ABflo® 488 Rabbit IgG isotype control (A22069,5 µl/Test, blue line). Non-fluorescently stained cells were used as blank control (red line).

Flow cytometry: 1X10⁶ C57BL/6 mouse splenocytes cells were surface-stained with ABflo® 488 Rabbit IgG isotype control (A22069,5 µl/Test, left) or ABflo® 488 Rabbit anti-Mouse CD162/PSGL-1 mAb (A25940,5 µl/Test, right).