

CD252 (OX40 Ligand) Rabbit mAb

Catalog No.: A25928 **Recombinant**

Basic Information

Observed MW

Refer to figures

Calculated MW

22kDa

Category

Primary antibody

Applications

IF/ICC,FC,ELISA

Cross-Reactivity

Mouse

CloneNo number

ARC66508

Background

Enables tumor necrosis factor receptor binding activity. Involved in several processes, including T cell activation; regulation of gene expression; and regulation of lymphocyte activation. Acts upstream of or within cholesterol metabolic process; inflammatory response; and negative regulation of cytokine production. Predicted to be located in cell surface. Predicted to be active in extracellular space. Is expressed in sensory organ and skeleton. Used to study primary pulmonary hypertension and type 1 diabetes mellitus. Human ortholog(s) of this gene implicated in myocardial infarction. Orthologous to human TNFSF4 (TNF superfamily member 4).

Recommended Dilutions

IF/ICC 1:200 - 1:800

FC 1:100 - 1:500

ELISA Recommended starting concentration is 1 µg/mL. Please optimize the concentration based on your specific assay requirements.

Immunogen Information

Gene ID

22164

Swiss Prot

P43488

Immunogen

Recombinant protein (or fragment). This information is considered to be commercially sensitive.

Synonyms

Ath1; gp34; Ath-1; Ox40l; TXGP1; CD134L; OX-40L; Tnlg2b; Txgp1l

Contact

☎ | 400-999-6126

✉ | cn.market@abclonal.com.cn

🌐 | www.abclonal.com.cn

Product Information

Source

Rabbit

Isotype

IgG

Purification

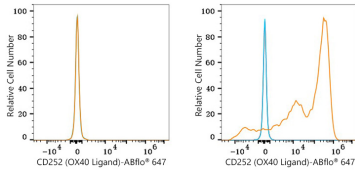
Affinity purification

Storage

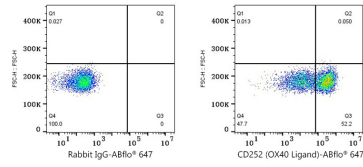
Store at -20°C. Avoid freeze / thaw cycles.

Buffer: PBS containing 50% glycerol and 0.05% BSA, preserved with proclin300 or sodium azide (as specified on the Certificate of Analysis), pH 7.3.

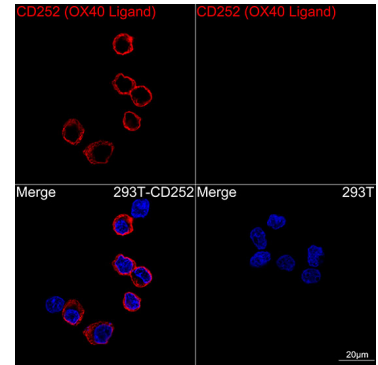
Validation Data



Flow cytometry: 1×10^6 293T (negative control, left) and 293T (Transfection, right) cells were surface-stained with CD252 (OX40 Ligand) Rabbit mAb (A25928, 2 $\mu\text{g}/\text{mL}$, orange line) or Rabbit IgG isotype control (AC042, 2 $\mu\text{g}/\text{mL}$, blue line), followed by Alexa Fluor® 647 conjugated goat anti-rabbit pAb staining. Non-fluorescently stained cells were used as blank control (red line).



Flow cytometry: 1×10^6 293T (Transfection, right) cells were surface-stained with Rabbit IgG isotype control (AC042, 2 $\mu\text{g}/\text{mL}$, left) or CD252 (OX40 Ligand) Rabbit mAb (A25928, 2 $\mu\text{g}/\text{mL}$, right), followed by Alexa Fluor® 647 conjugated goat anti-rabbit pAb staining.



Confocal imaging of 293T cells transfected with CD252 (OX40 Ligand) using CD252 (OX40 Ligand) Rabbit mAb (A25928, dilution 1:200) followed by a further incubation with Cy3 Goat Anti-Rabbit IgG (H+L) (AS007, dilution 1:500) (Red). DAPI was used for nuclear staining (Blue). Objective: 100x.