

# ABflo® 594 Rabbit anti-Human CD34 mAb

Catalog No.: A25895

## Basic Information

### Observed MW

### Calculated MW

35kDa/41kDa

### Category

Primary antibody

### Applications

IF/ICC,FC

### Cross-Reactivity

Human

### CloneNo number

ARC67795

### Conjugate

ABflo® 594. Ex:588nm. Em:604nm.

## Background

Enables sulfate binding activity. Acts upstream of or within leukocyte migration. Located in cytoplasm; external side of plasma membrane; and extracellular region. Is expressed in several structures, including alimentary system; cardiovascular system; extraembryonic component; genitourinary system; and skin. Orthologous to human CD34 (CD34 molecule).

## Recommended Dilutions

IF/ICC 1:50 - 1:200

FC 5 µl per 10<sup>6</sup> cells in  
100 µl volume

## Immunogen Information

### Gene ID

947

### Swiss Prot

P28906

### Immunogen

Recombinant protein (or fragment). This information is considered to be commercially sensitive.

### Synonyms

CD34;CD34 molecule;GIG3;MORT1

## Contact

☎ | 400-999-6126

✉ | [cn.market@abclonal.com.cn](mailto:cn.market@abclonal.com.cn)

🌐 | [www.abclonal.com.cn](http://www.abclonal.com.cn)

## Product Information

### Source

Rabbit

### Isotype

IgG

### Purification

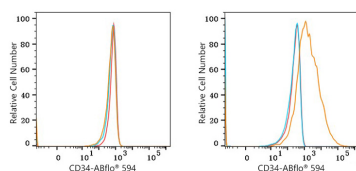
Affinity purification

### Storage

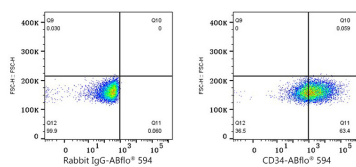
Store at 2-8°C. Avoid freeze.

Buffer: PBS containing 0.2% BSA, preserved with proclin300 or sodium azide (as specified on the Certificate of Analysis), pH 7.3.

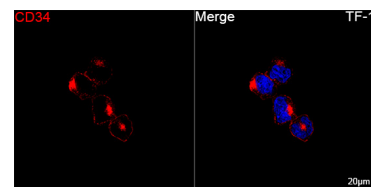
## Validation Data



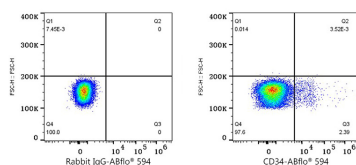
Flow cytometry: 1X10<sup>6</sup> HeLa cells (negative control, left) and MOLT-4 cells (right) were surface-stained with ABflo® 594 Rabbit anti-Human CD34 mAb (A25270, 5 µl/Test, orange line) or ABflo® 594 Rabbit IgG isotype control (A23821, 5 µl/Test, blue line). Non-fluorescently stained cells were used as blank control (red line).



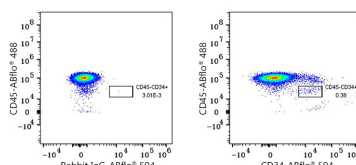
Flow cytometry: 1X10<sup>6</sup> MOLT-4 cells were surface-stained with ABflo® 594 Rabbit IgG isotype control (A23821, 5 µl/Test, left) or ABflo® 594 Rabbit anti-Human CD34 mAb (A25270, 5 µl/Test, right).



Confocal imaging of TF-1 cells using ABflo® 594 Rabbit anti-Human CD34 mAb (A25895, dilution 1:100) (Red). DAPI was used for nuclear staining (Blue). Objective: 100x.



Flow cytometry: 1X10<sup>6</sup> Human PBMC were surface-stained with ABflo® 594 Rabbit IgG isotype control (A23821, 5 µl/Test, left) or ABflo® 594 Rabbit anti-Human CD34 mAb (A25895, 5 µl/Test, right). Cells in the lymphocyte gate were used for analysis.



Flow cytometry: 1X10<sup>6</sup> Human PBMC were surface-stained with ABflo® 488 Rabbit anti-Human/Monkey CD45 mAb (A22494, 5 µl/Test) and ABflo® 594 Rabbit IgG isotype control (A23821, 5 µl/Test, left) or ABflo® 594 Rabbit anti-Human CD34 mAb (A25895, 5 µl/Test, right). Cells in the lymphocyte gate were used for analysis.