

# FcεR1α Rabbit mAb

Catalog No.: A25881 **Recombinant**

## Basic Information

### Observed MW

59kDa

### Calculated MW

30kDa

### Category

Primary antibody

### Applications

WB,FC,ELISA

### Cross-Reactivity

Human

### CloneNo number

ARC66910

## Background

The immunoglobulin epsilon receptor (IgE receptor) is the initiator of the allergic response. When two or more high-affinity IgE receptors are brought together by allergen-bound IgE molecules, mediators such as histamine that are responsible for allergy symptoms are released. This receptor is comprised of an alpha subunit, a beta subunit, and two gamma subunits. The protein encoded by this gene represents the alpha subunit.

## Recommended Dilutions

**WB** 1:1000 - 1:6000

**FC** 1:500 - 1:1000

**ELISA** Recommended starting concentration is 1 µg/mL. Please optimize the concentration based on your specific assay requirements.

## Immunogen Information

### Gene ID

2205

### Swiss Prot

P12319

### Immunogen

Recombinant protein (or fragment). This information is considered to be commercially sensitive.

### Synonyms

FCE1A; FcERI; FCERIA

## Contact

☎ | 400-999-6126

✉ | [cn.market@abclonal.com.cn](mailto:cn.market@abclonal.com.cn)

🌐 | [www.abclonal.com.cn](http://www.abclonal.com.cn)

## Product Information

### Source

Rabbit

### Isotype

IgG

### Purification

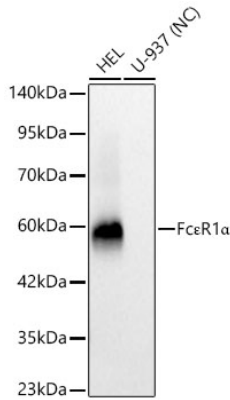
Affinity purification

### Storage

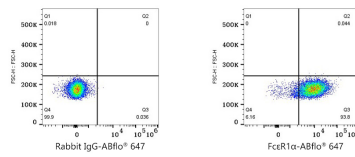
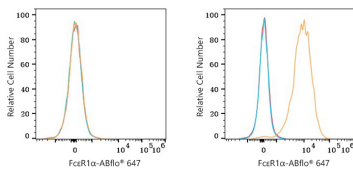
Store at -20°C. Avoid freeze / thaw cycles.

Buffer: PBS containing 50% glycerol and 0.05% BSA, preserved with proclin300 or sodium azide (as specified on the Certificate of Analysis), pH 7.3.

## Validation Data



Western blot analysis of various lysates using FcεR1α Rabbit mAb (A25881) at 1:1000 dilution incubated overnight at 4°C.  
 Secondary antibody: HRP-conjugated Goat anti-Rabbit IgG (H+L) (AS014) at 1:10000 dilution.  
 Lysates/proteins: 25 µg per lane.  
 Blocking buffer: 3% nonfat dry milk in TBST.  
 Detection: ECL Basic Kit (RM00020).  
 Negative control (NC): U-937  
 Exposure time: 10s.



Flow cytometry:  $1 \times 10^6$  Jurkat cells (negative control, left) and HEL cells (right) were surface-stained with FcεR1α Rabbit mAb (A25881, 2 µg/mL, orange line) or Rabbit IgG isotype control (AC042, 2 µg/mL, blue line), followed by followed by Alexa Fluor® 647 conjugated goat anti-rabbit pAb staining. Non-fluorescently stained cells were used as blank control (red line).

Flow cytometry:  $1 \times 10^6$  HEL cells were surface-stained with Rabbit IgG isotype control (AC042, 2 µg/mL, left) or FcεR1α Rabbit mAb (A25881, 2 µg/mL, right), followed by followed by Alexa Fluor® 647 conjugated goat anti-rabbit pAb staining.