

# Dopamine Transporter/DAT Rabbit mAb

Catalog No.: A25876 **Recombinant**

## Basic Information

### Observed MW

### Calculated MW

68kDa

### Category

Primary antibody

### Applications

ELISA, IHC-P

### Cross-Reactivity

Mouse

### CloneNo number

ARC66717

## Background

This gene encodes a dopamine transporter which is a member of the sodium- and chloride-dependent neurotransmitter transporter family. The 3' UTR of this gene contains a 40 bp tandem repeat, referred to as a variable number tandem repeat or VNTR, which can be present in 3 to 11 copies. Variation in the number of repeats is associated with idiopathic epilepsy, attention-deficit hyperactivity disorder, dependence on alcohol and cocaine, susceptibility to Parkinson disease and protection against nicotine dependence.

## Recommended Dilutions

IHC-P 1:100 - 1:500

## Immunogen Information

### Gene ID

6531

### Swiss Prot

Q01959

### Immunogen

A synthetic peptide corresponding to a sequence within amino acids 1-100 of human Dopamine Transporter/DAT (NP\_001035.1).

### Synonyms

DAT; DAT1; PKDYS; PKDYS1

## Contact

☎ | 400-999-6126

✉ | [cn.market@abclonal.com.cn](mailto:cn.market@abclonal.com.cn)

🌐 | [www.abclonal.com.cn](http://www.abclonal.com.cn)

## Product Information

### Source

Rabbit

### Isotype

IgG

### Purification

Affinity purification

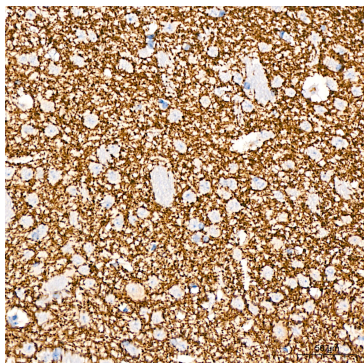
### Storage

Store at -20°C. Avoid freeze / thaw cycles.

Buffer: PBS with 0.05% proclin300, 0.05% BSA, 50% glycerol, pH7.3.

## Validation Data

---



Immunohistochemistry analysis of paraffin-embedded Mouse brain tissue using Dopamine Transporter/DAT Rabbit mAb (A25876) at a dilution of 1:500 (40x lens). High pressure antigen retrieval performed with 0.01M Citrate Buffer(pH 6.0) prior to IHC staining.