

Dopamine Transporter/DAT Rabbit mAb

Catalog No.: A25875 **Recombinant**

Basic Information

Observed MW

70-85 kDa

Calculated MW

68 kDa

Category

Primary antibody

Applications

WB,IF-P,IHC-P,mIHC,ELISA

Cross-Reactivity

Mouse, Rat

CloneNo number

ARC66721

Background

This gene encodes a dopamine transporter which is a member of the sodium- and chloride-dependent neurotransmitter transporter family. The 3' UTR of this gene contains a 40 bp tandem repeat, referred to as a variable number tandem repeat or VNTR, which can be present in 3 to 11 copies. Variation in the number of repeats is associated with idiopathic epilepsy, attention-deficit hyperactivity disorder, dependence on alcohol and cocaine, susceptibility to Parkinson disease and protection against nicotine dependence.

Recommended Dilutions

WB	1:1000 - 1:2000
IF-P	1:200-1:400
IHC-P	1:2000 - 1:20000
mIHC	1:5000 - 1:20000
ELISA	Recommended starting concentration is 1 µg/mL. Please optimize the concentration based on your specific assay requirements.

Contact

☎ | 400-999-6126

✉ | cn.market@abclonal.com.cn

🌐 | www.abclonal.com.cn

Immunogen Information

Gene ID

6531

Swiss Prot

Q01959

Immunogen

Synthetic peptide. This information is considered to be commercially sensitive.

Synonyms

DAT; DAT1; PKDYS; PKDYS1

Product Information

Source

Rabbit

Isotype

IgG

Purification

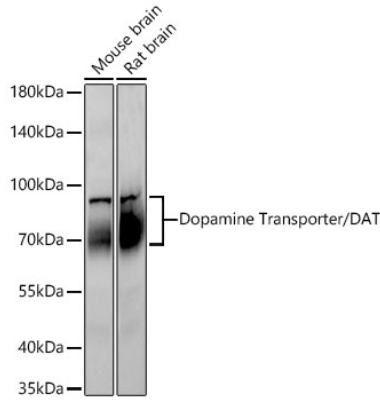
Affinity purification

Storage

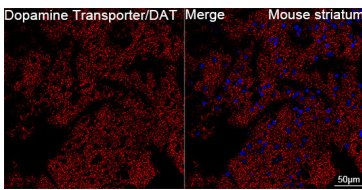
Store at -20°C. Avoid freeze / thaw cycles.

Buffer: PBS containing 50% glycerol and 0.05% BSA, preserved with proclin300 or sodium azide (as specified on the Certificate of Analysis), pH 7.3.

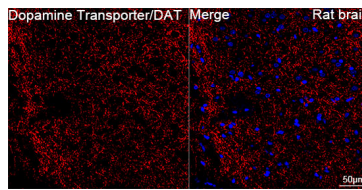
Validation Data



Western blot analysis of various lysates using Dopamine Transporter/DAT Rabbit mAb (A25875) at 1:1000 dilution incubated overnight at 4°C.
 Secondary antibody: HRP-conjugated Goat anti-Rabbit IgG (H+L) (AS014) at 1:10000 dilution.
 Lysates/proteins: 30 µg per lane.
 Blocking buffer: 3% nonfat dry milk in TBST.
 Detection: ECL Basic Kit (RM00020).
 Exposure time: 45s.



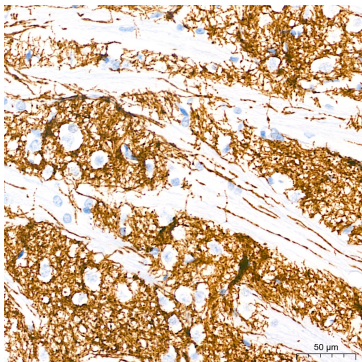
Confocal imaging of paraffin-embedded Mouse striatum tissue using Dopamine Transporter/DAT Rabbit mAb (A25875, dilution 1:200) followed by a further incubation with Cy3-conjugated Goat anti-Rabbit IgG (H+L) (AS007, dilution 1:500) (Red). DAPI was used for nuclear staining (Blue). Microwave antigen retrieval performed with 0.01M Citrate Buffer (pH 6.0) prior to IF staining. Objective: 40x.



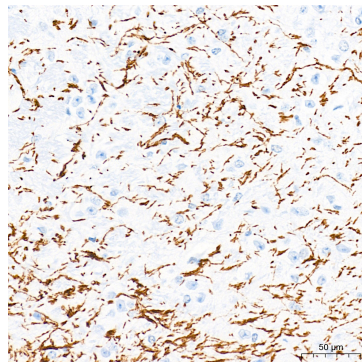
Confocal imaging of paraffin-embedded Rat brain tissue using Dopamine Transporter/DAT Rabbit mAb (A25875, dilution 1:200) followed by a further incubation with Cy3-conjugated Goat anti-Rabbit IgG (H+L) (AS007, dilution 1:500) (Red). DAPI was used for nuclear staining (Blue). Microwave antigen retrieval performed with 0.01M Citrate Buffer (pH 6.0) prior to IF staining. Objective: 40x.



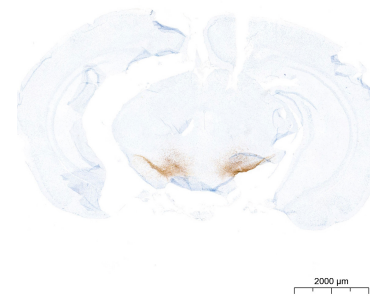
Immunohistochemistry analysis of paraffin-embedded Rat brain tissue using Dopamine Transporter/DAT Rabbit mAb (A25875) at a dilution of 1:2000 (1x lens). High pressure antigen retrieval performed with 0.01M Tris-EDTA Buffer (pH 9.0) prior to IHC staining.



Immunohistochemistry analysis of paraffin-embedded Rat brain tissue using Dopamine Transporter/DAT Rabbit mAb (A25875) at a dilution of 1:2000 (40x lens). High pressure antigen retrieval performed with 0.01M Tris-EDTA Buffer (pH 9.0) prior to IHC staining.

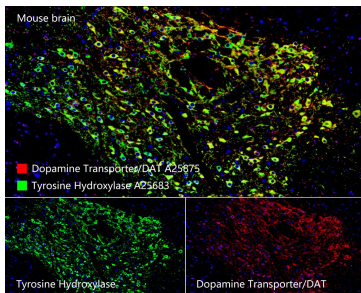


Immunohistochemistry analysis of paraffin-embedded Mouse brain tissue using Dopamine Transporter/DAT Rabbit mAb (A25875) at a dilution of 1:10000 (40x lens). High pressure antigen retrieval performed with 0.01M Tris-EDTA Buffer (pH 9.0) prior to IHC staining.



Immunohistochemistry analysis of paraffin-embedded Mouse brain tissue using Dopamine Transporter/DAT Rabbit mAb (A25875) at a dilution of 1:10000 (2x lens). High pressure antigen retrieval performed with 0.01M Tris-EDTA Buffer (pH 9.0) prior to IHC staining.

Validation Data



The multiplex IHC analysis on paraffin-embedded Mouse brain tissue using the following specific primary antibodies and tyramide signal amplification (TSA) reagents (RK05903) : Tyrosine Hydroxylase Rabbit mAb (A25683, 1:5000) with TSA-TYR-520 (Green), and Dopamine Transporter/DAT Rabbit mAb (A25875, 1:10000) with TSA-TYR-570 (Red). DAPI (Blue) was used for nuclear staining. Prior to multiplex IHC staining, high-pressure antigen retrieval was performed using 0.01M citrate buffer at pH 6.0. The analysis was completed using a 40x objective lens.