

[KD Validated] TRIM25 Rabbit mAb

Catalog No.: A25846 **Recombinant**

Basic Information

Observed MW

72kDa/

Calculated MW

71kDa

Category

Primary antibody

Applications

WB,IHC-P,IF/ICC,IP,ELISA

Cross-Reactivity

Human

CloneNo number

ARC67400

Background

The protein encoded by this gene is a member of the tripartite motif (TRIM) family. The TRIM motif includes three zinc-binding domains, a RING, a B-box type 1 and a B-box type 2, and a coiled-coil region. The protein is an RNA binding protein, functions as a ubiquitin E3 ligase and is involved in multiple cellular processes, including regulation of antiviral innate immunity.

Recommended Dilutions

WB	1:4000 - 1:24000
IHC-P	1:300 - 1:3000
IF/ICC	1:200 - 1:800
IP	0.5µg-4µg antibody for 200µg-400µg extracts of whole cells
ELISA	Recommended starting concentration is 1 µg/mL. Please optimize the concentration based on your specific assay requirements.

Contact

☎ | 400-999-6126

✉ | cn.market@abclonal.com.cn

🌐 | www.abclonal.com.cn

Immunogen Information

Gene ID

7706

Swiss Prot

Q14258

Immunogen

Recombinant protein (or fragment). This information is considered to be commercially sensitive.

Synonyms

EFP; Z147; RNF147; ZNF147

Product Information

Source

Rabbit

Isotype

IgG

Purification

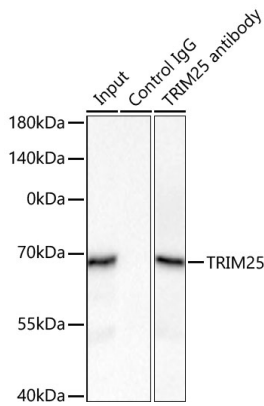
Affinity purification

Storage

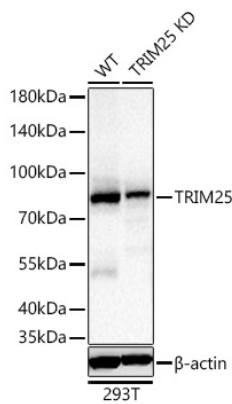
Store at -20°C. Avoid freeze / thaw cycles.

Buffer: PBS containing 50% glycerol and 0.05% BSA, preserved with proclin300 or sodium azide (as specified on the Certificate of Analysis), pH 7.3.

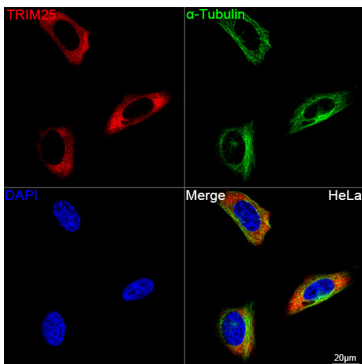
Validation Data



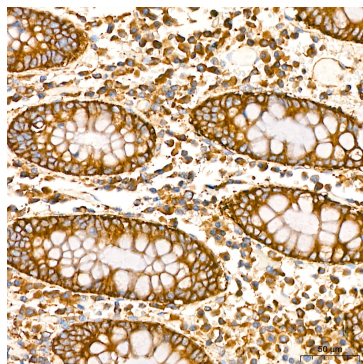
Immunoprecipitation of TRIM25 from 300 μ g extracts of 293T cells was performed using 3 μ g of [KD Validated] TRIM25 Rabbit mAb (A25846). Rabbit IgG isotype control (AC042) was used to precipitate the Control IgG sample. IP samples were eluted with 1X Laemmli Buffer. The Input lane represents 10% of the total input. Western blot analysis of immunoprecipitates was conducted using [KD Validated] TRIM25 Rabbit mAb (A25846) at a dilution of 1:5000.



Western blot analysis of lysates from wild type (WT) and TRIM25 knockdown (KD) 293T cells using [KD Validated] TRIM25 Rabbit mAb (A25846) at 1:4700 dilution incubated overnight at 4°C. Secondary antibody: HRP-conjugated Goat anti-Rabbit IgG (H+L) (AS014) at 1:10000 dilution. Lysates/proteins: 25 μ g per lane. Blocking buffer: 3% nonfat dry milk in TBST. Detection: ECL Basic Kit (RM00020). Exposure time: 2s.



Confocal imaging of HeLa cells using [KD Validated] TRIM25 Rabbit mAb (A25846, dilution 1:200) followed by a further incubation with Cy3 Goat Anti-Rabbit IgG (H+L) (AS007, dilution 1:500) (Red). The cells were counterstained with α -Tubulin Mouse mAb (AC012, dilution 1:400) followed by incubation with ABflo® 488-conjugated Goat Anti-Mouse IgG (H+L) Ab (AS076, dilution 1:500) (Green). DAPI was used for nuclear staining (Blue). Objective: 100x.



Immunohistochemistry analysis of paraffin-embedded Human colon tissue using [KD Validated] TRIM25 Rabbit mAb (A25846) at a dilution of 1:300 (40x lens). High pressure antigen retrieval performed with 0.01M Citrate buffer (pH 6.0) prior to IHC staining.