

# B6R Rabbit mAb

Catalog No.: A25795 **Recombinant**

## Basic Information

### Observed MW

40kDa

### Calculated MW

35kDa

### Category

Primary antibody

### Applications

WB, ELISA

### Cross-Reactivity

Monkeypox virus (strain Zaire-96-l-16)

### CloneNo number

ARC67145

## Background

B6R is a host-range protein located on the membrane of the extracellular envelope virion (EEV), homologous to vaccinia virus complement control protein B5, which is involved in the negative regulation of complement activation.

## Recommended Dilutions

**WB** 1:2000 - 1:8000

**ELISA** Recommended starting concentration is 1 µg/mL. Please optimize the concentration based on your specific assay requirements.

## Immunogen Information

### Gene ID

928902

### Swiss Prot

Q8V4S2

### Immunogen

Recombinant protein (or fragment). This information is considered to be commercially sensitive.

### Synonyms

## Contact

☎ | 400-999-6126

✉ | [cn.market@abclonal.com.cn](mailto:cn.market@abclonal.com.cn)

🌐 | [www.abclonal.com.cn](http://www.abclonal.com.cn)

## Product Information

### Source

Rabbit

### Isotype

IgG

### Purification

Affinity purification

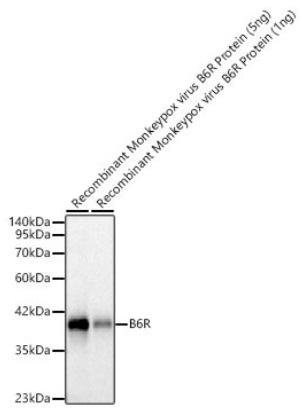
### Storage

Store at -20°C. Avoid freeze / thaw cycles.

Buffer: PBS containing 50% glycerol and 0.05% BSA, preserved with proclin300 or sodium azide (as specified on the Certificate of Analysis), pH 7.3.

## Validation Data

---



Western blot analysis of recombinant Monkeypox virus B6R Protein using B6R Rabbit mAb (A25795) at 1:2000 dilution incubated overnight at 4°C.  
Secondary antibody: HRP-conjugated Goat anti-Rabbit IgG (H+L) (AS014) at 1:10000 dilution.  
Lysates/proteins: 1-5ng per lane.  
Blocking buffer: 3% nonfat dry milk in TBST.  
Detection: ECL Basic Kit (RM00020)  
Exposure time: 5 s.