

CD271 Rabbit pAb

Catalog No.: A25756

Basic Information

Observed MW

Refer to figures

Calculated MW

46kDa

Category

Primary antibody

Applications

IHC-P, ELISA

Cross-Reactivity

Human

Background

Enables death receptor activity; nerve growth factor binding activity; and small GTPase binding activity. Involved in several processes, including cellular glucose homeostasis; circadian regulation of gene expression; and dorsal aorta development. Acts upstream of or within several processes, including hair follicle morphogenesis; nervous system development; and regulation of signal transduction. Located in several cellular components, including cell surface; cell-cell junction; and postsynaptic density. Is expressed in several structures, including alimentary system; genitourinary system; integumental system; nervous system; and sensory organ. Human ortholog(s) of this gene implicated in Alzheimer's disease and mental depression. Orthologous to human NGFR (nerve growth factor receptor).

Recommended Dilutions

IHC-P 1:50 - 1:200

ELISA Recommended starting concentration is 1 µg/mL. Please optimize the concentration based on your specific assay requirements.

Immunogen Information

Gene ID

18053

Swiss Prot

Q9Z0W1

Immunogen

Recombinant protein (or fragment). This information is considered to be commercially sensitive.

Synonyms

p75; LNGFR; p75NTR; p75NGFR; Tnfrsf16

Contact

☎ | 400-999-6126

✉ | cn.market@abclonal.com.cn

🌐 | www.abclonal.com.cn

Product Information

Source

Rabbit

Isotype

IgG

Purification

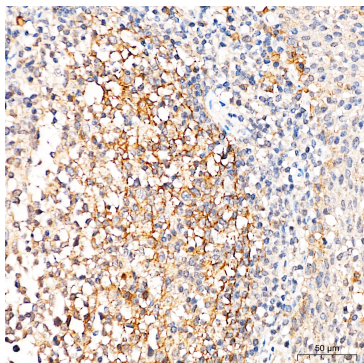
Affinity purification

Storage

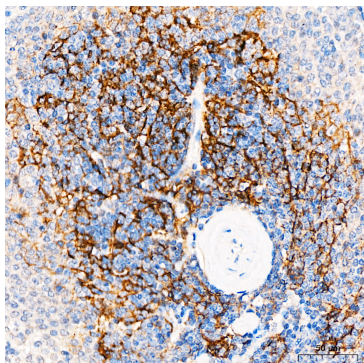
Store at -20°C. Avoid freeze / thaw cycles.

Buffer: PBS containing 50% glycerol, preserved with proclin300 or sodium azide (as specified on the Certificate of Analysis), pH 7.3.

Validation Data



Immunohistochemistry analysis of paraffin-embedded Human tonsil tissue using CD271 Rabbit pAb (A25756) at a dilution of 1:100 (40x lens). High pressure antigen retrieval performed with 0.01M Citrate buffer (pH 6.0) prior to IHC staining.



Immunohistochemistry analysis of paraffin-embedded Human spleen tissue using CD271 Rabbit pAb (A25756) at a dilution of 1:100 (40x lens). High pressure antigen retrieval performed with 0.01M Citrate buffer (pH 6.0) prior to IHC staining.