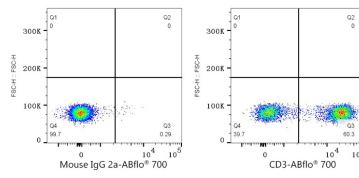
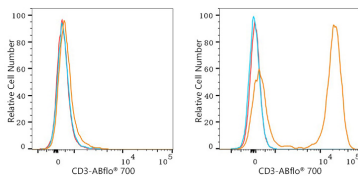


Validation Data



Flow cytometry: 1×10^6 Raji cells (negative control, left) and Human PBMC (right) were surface-stained with ABflo® 700 Mouse anti-Human CD3 mAb (A24943, 5 μ l/Test, orange line) or ABflo® 700 Mouse IgG 2a isotype control (A25744, 5 μ l/Test, blue line). Non-fluorescently stained cells were used as blank control (red line).

Flow cytometry: 1×10^6 Human PBMC were surface-stained with ABflo® 700 Mouse IgG 2a isotype control (A25744, 5 μ l/Test, left) or ABflo® 700 Mouse anti-Human CD3 mAb (A24943, 5 μ l/Test, right).