

# PE Rabbit anti-Human/Monkey PD-1/CD279 mAb

Catalog No.: A25730

## Basic Information

### Observed MW

### Calculated MW

32kDa

### Category

Primary antibody

### Applications

FC

### Cross-Reactivity

Human, Cynomolgus

### CloneNo number

ARC64145

### Conjugate

PE. Ex:565nm. Em:574nm.

## Recommended Dilutions

FC 5  $\mu$ l per  $10^6$  cells in  
100  $\mu$ l volume

## Background

Programmed cell death protein 1 (PDCD1) is an immune-inhibitory receptor expressed in activated T cells; it is involved in the regulation of T-cell functions, including those of effector CD8+ T cells. In addition, this protein can also promote the differentiation of CD4+ T cells into T regulatory cells. PDCD1 is expressed in many types of tumors including melanomas, and has demonstrated to play a role in anti-tumor immunity. Moreover, this protein has been shown to be involved in safeguarding against autoimmunity, however, it can also contribute to the inhibition of effective anti-tumor and anti-microbial immunity.

## Immunogen Information

### Gene ID

Hu 5133 Cyon 102123659

### Swiss Prot

Q15116

### Immunogen

Recombinant protein (or fragment). This information is considered to be commercially sensitive.

### Synonyms

PD1; PD-1; CD279; SLEB2; hPD-1; hPD-I; hSLE1

## Contact

 | 400-999-6126

 | [cn.market@abclonal.com.cn](mailto:cn.market@abclonal.com.cn)

 | [www.abclonal.com.cn](http://www.abclonal.com.cn)

## Product Information

### Source

Rabbit

### Isotype

IgG

### Purification

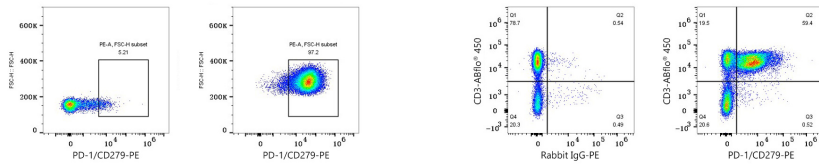
Affinity purification

### Storage

Store at 2-8°C. Avoid freeze.

Buffer: PBS containing 0.2% BSA, preserved with proclin300 or sodium azide (as specified on the Certificate of Analysis), pH 7.3.

## Validation Data



Flow cytometry:  $1 \times 10^6$  Human PBMC (untreated, left) and Human PBMC (treated with  $5 \mu\text{g/mL}$  PHA for 72 hours, right) were surface-stained with PE Rabbit anti-Human/Monkey PD-1/CD279 mAb (A25730,  $5 \mu\text{l/Test}$ ). Cells in the lymphocyte gate were used for analysis.

Flow cytometry:  $1 \times 10^6$  Cynomolgus PBMC were surface-stained with ABflo® 450 Rabbit anti-Human/Monkey CD3 mAb (A27177,  $5 \mu\text{l/Test}$ ) and PE Rabbit IgG isotype control (A24172,  $5 \mu\text{l/Test}$ , left) or PE Rabbit anti-Human/Monkey PD-1/CD279 mAb (A25730,  $5 \mu\text{l/Test}$ , right). Cells in the lymphocyte gate were used for analysis.