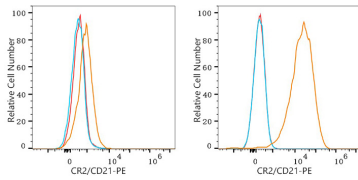
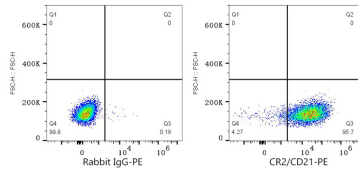


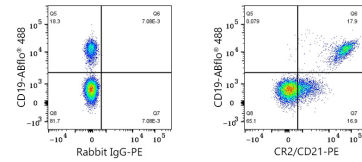
Validation Data



Flow cytometry: 1×10^6 HAP1 cells (negative control, left) and Daudi cells (right) were surface-stained with PE Rabbit anti-Human CR2/CD21 mAb (A25702, 5 μ l/Test, orange line) or PE Rabbit IgG isotype control (A24172, 5 μ l/Test, blue line). Non-fluorescently stained cells were used as blank control (red line).



Flow cytometry: 1×10^6 Daudi cells were surface-stained with PE Rabbit IgG isotype control (A24172, 5 μ l/Test, left) or PE Rabbit anti-Human CR2/CD21 mAb (A25702, 5 μ l/Test, right).



Flow cytometry: 1×10^6 Human PBMC were surface-stained with ABflo® 488 Rabbit anti-Human/Monkey CD19 mAb (A23008, 5 μ l/Test) and PE Rabbit IgG isotype control (A24172, 5 μ l/Test, left) or PE Rabbit anti-Human CR2/CD21 mAb (A25702, 5 μ l/Test, right). Cells in the lymphocyte gate were used for analysis.