

PE Rabbit anti-Mouse/Rat CD27 mAb

Catalog No.: A25696

Basic Information

Observed MW

Calculated MW

28kDa

Category

Primary antibody

Applications

FC

Cross-Reactivity

Mouse, Rat

CloneNo number

ARC67086

Conjugate

PE. Ex:565nm. Em:574nm.

Background

Predicted to enable cysteine-type endopeptidase inhibitor activity involved in apoptotic process. Involved in negative regulation of apoptotic process and positive regulation of JNK cascade. Acts upstream of or within negative regulation of T cell apoptotic process. Located in external side of plasma membrane. Is expressed in several structures, including femur; hemolymphoid system; intestine; pituitary gland; and reproductive system. Human ortholog(s) of this gene implicated in lymphoproliferative syndrome 2. Orthologous to human CD27 (CD27 molecule).

Recommended Dilutions

FC 5 µl per 10⁶ cells in
100 µl volume

Immunogen Information

Gene ID

21940

Swiss Prot

P41272

Immunogen

Recombinant protein (or fragment). This information is considered to be commercially sensitive.

Synonyms

S152; Tp55; Tnfrsf7

Contact

☎ | 400-999-6126

✉ | cn.market@abclonal.com.cn

🌐 | www.abclonal.com.cn

Product Information

Source

Rabbit

Isotype

IgG

Purification

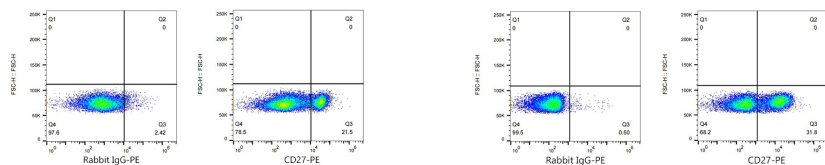
Affinity purification

Storage

Store at 2-8°C. Avoid freeze.

Buffer: PBS containing 0.2% BSA, preserved with proclin300 or sodium azide (as specified on the Certificate of Analysis), pH 7.3.

Validation Data



Flow cytometry: 1×10^6 C57BL/6 mouse Splenocytes were surface-stained with PE Rabbit IgG isotype control (A24172, 5 μ l/Test, left) or PE Rabbit anti-Mouse/Rat CD27 mAb (A25696, 5 μ l/Test, right).

Flow cytometry: 1×10^6 Rat splenocytes were surface-stained with PE Rabbit IgG isotype control (A24172, 5 μ l/Test, left) or PE Rabbit anti-Mouse/Rat CD27 mAb (A25696, 5 μ l/Test, right).