

# IFN-gamma Rabbit mAb

Catalog No.: A25684 **Recombinant** **2 Publications**

## Basic Information

### Observed MW

17kDa

### Calculated MW

19kDa

### Category

Primary antibody

### Applications

WB,FC (intra),ELISA

### Cross-Reactivity

Human

### CloneNo number

ARC67550

## Background

This gene encodes a soluble cytokine that is a member of the type II interferon class. The encoded protein is secreted by cells of both the innate and adaptive immune systems. The active protein is a homodimer that binds to the interferon gamma receptor which triggers a cellular response to viral and microbial infections. Mutations in this gene are associated with an increased susceptibility to viral, bacterial and parasitic infections and to several autoimmune diseases.

## Recommended Dilutions

**WB** 1:1000 - 1:2000

**FC (intra)** 1:100 - 1:500

**ELISA** Recommended starting concentration is 1 µg/mL. Please optimize the concentration based on your specific assay requirements.

## Immunogen Information

### Gene ID

3458

### Swiss Prot

P01579

### Immunogen

Recombinant protein (or fragment). This information is considered to be commercially sensitive.

### Synonyms

IFG; IFI; IMD69

## Contact

☎ | 400-999-6126

✉ | [cn.market@abclonal.com.cn](mailto:cn.market@abclonal.com.cn)

🌐 | [www.abclonal.com.cn](http://www.abclonal.com.cn)

## Product Information

### Source

Rabbit

### Isotype

IgG

### Purification

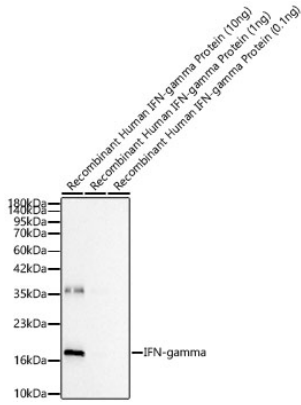
Affinity purification

### Storage

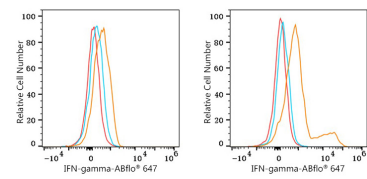
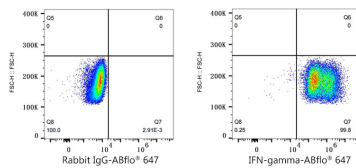
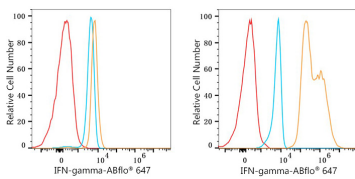
Store at -20°C. Avoid freeze / thaw cycles.

Buffer: PBS containing 50% glycerol and 0.05% BSA, preserved with proclin300 or sodium azide (as specified on the Certificate of Analysis), pH 7.3.

## Validation Data



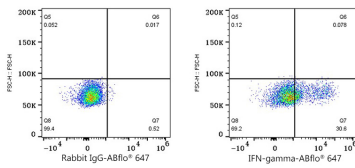
Western blot analysis of Active Recombinant Human IFN-gamma Protein (RP01038) using IFN-gamma Rabbit mAb (A25684) at 1:1000 dilution incubated overnight at 4°C.  
 Secondary antibody: HRP-conjugated Goat anti-Rabbit IgG (H+L) (AS014) at 1:10000 dilution.  
 Lysates/proteins: 0.1ng - 10ng per lane.  
 Blocking buffer: 3% nonfat dry milk in TBST.  
 Detection: ECL Basic Kit (RM00020).  
 Exposure time: 45s.



Flow cytometry:  $1 \times 10^6$  293T cells (negative control, left) and 293T (Transfection, right) cells were intracellularly-stained with IFN-gamma Rabbit mAb (A25684, 2  $\mu\text{g}/\text{mL}$ , orange line) or Rabbit IgG isotype control (AC042, 2  $\mu\text{g}/\text{mL}$ , blue line), followed by Alexa Fluor® 647 conjugated goat anti-rabbit pAb staining. Non-fluorescently stained cells were used as blank control (red line).

Flow cytometry:  $1 \times 10^6$  293T (Transfection) cells were intracellularly-stained with Rabbit IgG isotype control (AC042, 2  $\mu\text{g}/\text{mL}$ , left) or IFN-gamma Rabbit mAb (A25684, 2  $\mu\text{g}/\text{mL}$ , right), followed by Alexa Fluor® 647 conjugated goat anti-rabbit pAb staining.

Flow cytometry:  $1 \times 10^6$  PBMC (negative control, left) and PBMC (treated with TPA+Ionomycin+Brefeldin A, right) were intracellularly-stained with IFN-gamma Rabbit mAb (A25684, 2  $\mu\text{g}/\text{mL}$ , orange line) or Rabbit IgG isotype control (AC042, 2  $\mu\text{g}/\text{mL}$ , blue line), followed by Alexa Fluor® 647 conjugated goat anti-rabbit pAb staining. Non-fluorescently stained cells were used as blank control (red line).



Flow cytometry:  $1 \times 10^6$  PBMC (treated with TPA+Ionomycin+Brefeldin A) were intracellularly-stained with Rabbit IgG isotype control (AC042, 2  $\mu\text{g}/\text{mL}$ , left) or IFN-gamma Rabbit mAb (A25684, 2  $\mu\text{g}/\text{mL}$ , right), followed by Alexa Fluor® 647 conjugated goat anti-rabbit pAb staining.