

# FSH alpha/beta Rabbit mAb

Catalog No.: A25649 **Recombinant**

## Basic Information

### Observed MW

### Calculated MW

13kDa/15kDa

### Category

Primary antibody

### Applications

IHC-P,IF/ICC,ELISA

### Cross-Reactivity

Human

### CloneNo number

ARC65860

## Background

The four human glycoprotein hormones chorionic gonadotropin (CG), luteinizing hormone (LH), follicle stimulating hormone (FSH), and thyroid stimulating hormone (TSH) are dimers consisting of alpha and beta subunits that are associated noncovalently. The alpha subunits of these hormones are identical, however, their beta chains are unique and confer biological specificity. The protein encoded by this gene is the alpha subunit and belongs to the glycoprotein hormones alpha chain family. Two transcript variants encoding different isoforms have been found for this gene.

## Recommended Dilutions

**IHC-P** 1:700 - 1:7000

**IF/ICC** 1:500 - 1:2000

**ELISA** Recommended starting concentration is 1 µg/mL. Please optimize the concentration based on your specific assay requirements.

## Immunogen Information

### Gene ID

1081/2488

### Swiss Prot

P01215/P01225

### Immunogen

Recombinant fusion protein containing a sequence corresponding to amino acids 25-116 of human FSH alpha/beta(NP\_000726.1/NP\_000501.1).

### Synonyms

HCG; LHA; FSHA; GPA1; GPHA; TSHA; GPHA1; CG-ALPHA;FSHB

## Contact

☎ | 400-999-6126

✉ | [cn.market@abclonal.com.cn](mailto:cn.market@abclonal.com.cn)

🌐 | [www.abclonal.com.cn](http://www.abclonal.com.cn)

## Product Information

### Source

Rabbit

### Isotype

IgG

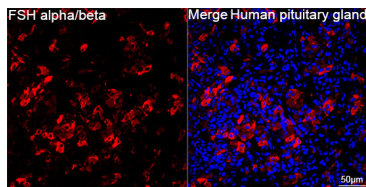
### Purification

Affinity purification

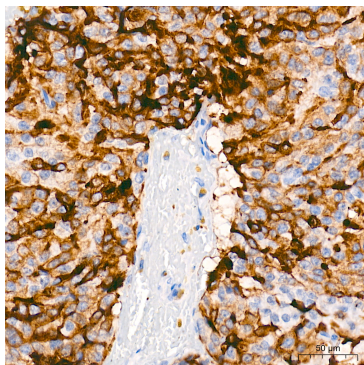
### Storage

Store at -20°C. Avoid freeze / thaw cycles.

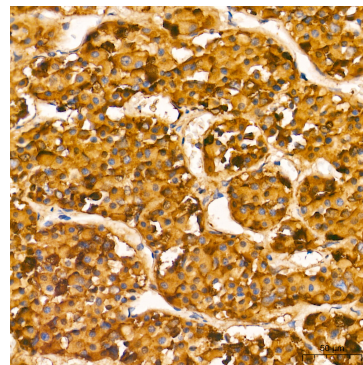
Buffer: PBS with 0.09% Sodium azide,0.05% BSA,50% glycerol,pH7.3.



Confocal imaging of paraffin-embedded Human pituitary gland tissue using FSH alpha/beta Rabbit mAb (A25649, dilution 1:500) followed by a further incubation with Cy3 Goat Anti-Rabbit IgG (H+L) (AS007, dilution 1:500) (Red). DAPI was used for nuclear staining (Blue). Objective: 40x. Perform high pressure antigen retrieval with 0.01 M citrate buffer (pH 6.0) prior to IF staining.



Immunohistochemistry analysis of paraffin-embedded Human pituitary adenoma tissue using FSH alpha/beta Rabbit mAb (A25649) at a dilution of 1:700 (40x lens). High pressure antigen retrieval performed with 0.01M Tris-EDTA Buffer (pH 9.0) prior to IHC staining.



Immunohistochemistry analysis of paraffin-embedded Human pituitary tissue using FSH alpha/beta Rabbit mAb (A25649) at a dilution of 1:700 (40x lens). High pressure antigen retrieval performed with 0.01M Tris-EDTA Buffer (pH 9.0) prior to IHC staining.