

RXRB Rabbit mAb

Catalog No.: A25648 **Recombinant**

Basic Information

Observed MW

72kDa

Calculated MW

57kDa

Category

Primary antibody

Applications

WB, IP, ELISA, ChIP

Cross-Reactivity

Mouse

CloneNo number

ARC61272

Background

This gene encodes a member of the retinoid X receptor (RXR) family of nuclear receptors which are involved in mediating the effects of retinoic acid (RA). The encoded protein forms homodimers with the retinoic acid, thyroid hormone, and vitamin D receptors, increasing both DNA binding and transcriptional function on their respective response elements. This gene lies within the major histocompatibility complex (MHC) class II region on chromosome 6. Alternatively spliced transcript variants encoding multiple isoforms have been observed for this gene.

Recommended Dilutions

WB 1:1000 - 1:2000**IP** 0.5µg-4µg antibody for
400µg-600µg extracts of
whole cells**ELISA** Recommended starting
concentration is 1 µg/mL.
Please optimize the
concentration based on
your specific assay
requirements.**ChIP** 3µg antibody for
10µg-15µg of Chromatin

Immunogen Information

Gene ID

6257

Swiss Prot

P28702

Immunogen

Synthetic peptide. This information is considered to be commercially sensitive.

Synonyms

NR2B2; DAUDI6; RCoR-1; RXRbeta; H-2RIIBP; RXR-beta

Product Information

Source

Rabbit

Isotype

IgG

Purification

Affinity purification

Storage

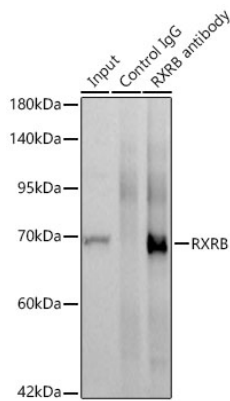
Store at -20°C. Avoid freeze / thaw cycles.

Buffer: PBS containing 50% glycerol and 0.05% BSA, preserved with proclin300 or sodium azide (as specified on the Certificate of Analysis), pH 7.3.

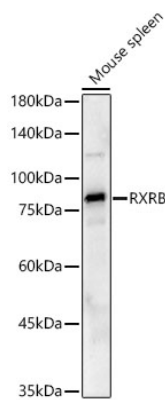
Contact

 | 400-999-6126 | cn.market@abclonal.com.cn | www.abclonal.com.cn

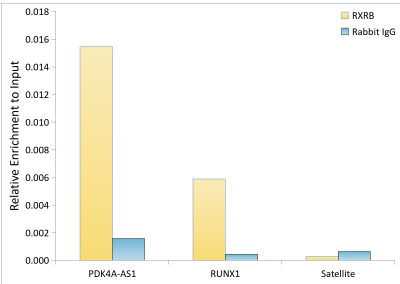
Validation Data



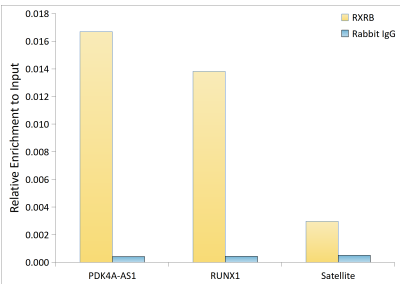
Immunoprecipitation of RXRB from 600 µg extracts of Mouse thymus tissue was performed using 3 µg of RXRB Rabbit mAb (A25648). Rabbit IgG isotype control(AC042) was used to precipitate the Control IgG sample. IP samples were eluted with 1X Laemmli Buffer. The Input lane represents 10% of the total input. Western blot analysis of immunoprecipitates was conducted using RXRB Rabbit mAb (A25648) at a dilution of 1:1000.



Western blot analysis of lysates from Mouse spleen using RXRB Rabbit mAb (A25648) at 1:1500 dilution. Secondary antibody:HRP Goat Anti-Rabbit IgG (H+L) (AS014) at 1:10000 dilution. Lysates/proteins: 25 µg per lane. Blocking buffer: 3% nonfat dry milk in TBST. Detection: ECL Basic Kit (RM00020). Exposure time:45s.



Chromatin immunoprecipitation was performed with 15 µg of cross-linked chromatin from HeLa cells transfected with a RXRB expression vector containing a single N-terminal flag-Tag, using 3 µg of RXRB Rabbit mAb (A25648) and IgG (AC042). The enrichment of immunoprecipitated DNA at different genomic loci was examined by quantitative PCR. The histogram compares the ratio of the immunoprecipitated DNA to the input at given loci.



Chromatin immunoprecipitation was performed with 15 µg of cross-linked chromatin from HeLa cells transfected with a RXRB expression vector containing a single C-terminal flag-Tag, using 3 µg of RXRB Rabbit mAb (A25648) and IgG (AC042). The enrichment of immunoprecipitated DNA at different genomic loci was examined by quantitative PCR. The histogram compares the ratio of the immunoprecipitated DNA to the input at given loci.