

PE Rabbit anti-Human NG2 mAb

Catalog No.: A25623

Basic Information

Observed MW

Calculated MW
251kDa

Category
Primary antibody

Applications
FC

Cross-Reactivity
Human

CloneNo number
ARC64580-PE

Conjugate
PE. Ex:565nm. Em:574nm.

Background

A human melanoma-associated chondroitin sulfate proteoglycan plays a role in stabilizing cell-substratum interactions during early events of melanoma cell spreading on endothelial basement membranes. CSPG4 represents an integral membrane chondroitin sulfate proteoglycan expressed by human malignant melanoma cells.

Recommended Dilutions

FC 5 µl per 10⁶ cells in
100 µl volume

Immunogen Information

Gene ID	Swiss Prot
1464	Q6UVK1

Immunogen

Recombinant fusion protein containing a sequence corresponding to amino acids 1583-2224 of human NG2 (NP_001888.2).

Synonyms

NG2; MCSP; MCSPG; MSK16; CSPG4A; HMW-MAA; MEL-CSPG

Contact

	400-999-6126
	cn.market@abclonal.com.cn
	www.abclonal.com.cn

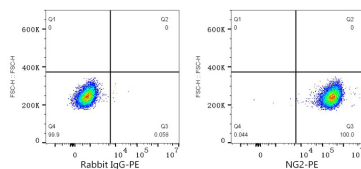
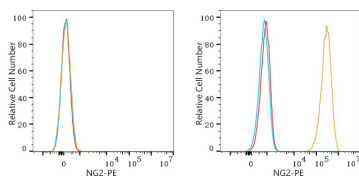
Product Information

Source	Isotype	Purification
Rabbit	IgG	Affinity purification

Storage

Store at 2-8°C. Avoid freeze.
Buffer: PBS with 0.03% proclin300,0.2% BSA,pH7.3.

Validation Data



Flow cytometry: 1×10^6 Jurkat cells (negative control, left) and SK-MEL-28 cells (right) were surface-stained with PE Rabbit anti-Human NG2 mAb (A25623, 5 μ l/Test, orange line) or PE Rabbit IgG isotype control (A24172, 5 μ l/Test, blue line). Non-fluorescently stained cells were used as blank control (red line).

Flow cytometry: 1×10^6 SK-MEL-28 cells were surface-stained with PE Rabbit IgG isotype control (A24172, 5 μ l/Test, left) or PE Rabbit anti-Human NG2 mAb (A25623, 5 μ l/Test, right).