

FAM38A/PIEZO1 Rabbit pAb

Catalog No.: A25588

Basic Information

Observed MW

315kDa

Calculated MW

287kDa

Category

Primary antibody

Applications

WB, ELISA

Cross-Reactivity

Human

Background

The protein encoded by this gene is a mechanically-activated ion channel that links mechanical forces to biological signals. The encoded protein contains 36 transmembrane domains and functions as a homotetramer. Defects in this gene have been associated with dehydrated hereditary stomatocytosis.

Recommended Dilutions

WB 1:500 - 1:1000

ELISA Recommended starting concentration is 1 µg/mL. Please optimize the concentration based on your specific assay requirements.

Immunogen Information

Gene ID

9780

Swiss Prot

Q92508

Immunogen

Recombinant protein (or fragment). This information is considered to be commercially sensitive.

Synonyms

ER; DHS; Mib; LMPH3; FAM38A; LMPHM6

Contact

 | 400-999-6126

 | cn.market@abclonal.com.cn

 | www.abclonal.com.cn

Product Information

Source

Rabbit

Isotype

IgG

Purification

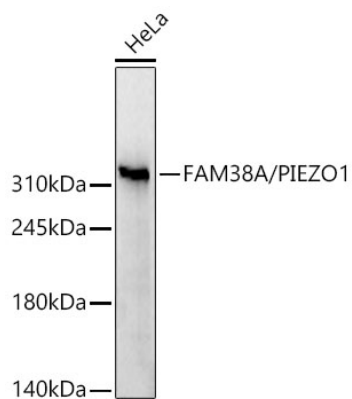
Affinity purification

Storage

Store at -20°C. Avoid freeze / thaw cycles.

Buffer: PBS with 0.09% Sodium azide, 50% glycerol, pH7.3.

Validation Data



Western blot analysis of lysates from HeLa cells using FAM38A/PIEZO1 Rabbit pAb (A25588) at 1:1000 dilution.

Secondary antibody: HRP-conjugated Goat anti-Rabbit IgG (H+L) (AS014) at 1:10000 dilution.

Lysates/proteins: 25 µg per lane.

Blocking buffer: 3% nonfat dry milk in TBST.

Detection: ECL Basic Kit (RM00020).

Exposure time: 30s.