

# ABflo® 647 Rabbit anti-Mouse CD6 mAb

Catalog No.: A25564

## Basic Information

### Observed MW

### Calculated MW

64kDa/68kDa/72kDa

### Category

Primary antibody

### Applications

FC

### Cross-Reactivity

Mouse

### CloneNo number

ARC66616

### Conjugate

ABflo® 647. Ex:648nm. Em:664nm.

## Recommended Dilutions

FC 5 µl per 10<sup>6</sup> cells in  
100 µl volume

## Background

Predicted to enable several functions, including identical protein binding activity; lipopolysaccharide binding activity; and lipoteichoic acid binding activity. Predicted to be involved in several processes, including heterophilic cell-cell adhesion via plasma membrane cell adhesion molecules; lipopolysaccharide-mediated signaling pathway; and positive regulation of macromolecule metabolic process. Predicted to act upstream of or within cell adhesion. Predicted to be located in immunological synapse. Predicted to be spanning component of plasma membrane. Predicted to be part of T cell receptor complex. Predicted to be active in external side of plasma membrane. Orthologous to human CD6 (CD6 molecule).

## Immunogen Information

### Gene ID

12511

### Swiss Prot

Q61003

### Immunogen

Recombinant protein (or fragment). This information is considered to be commercially sensitive.

### Synonyms

Eukaryota; Metazoa; Chordata; Craniata; Vertebrata; Euteleostomi; Mammalia; Eutheria; Euarchontoglires; Glires; Rodentia; Myomorpha; Muroidea; Muridae; Murinae; Mus; Mus

## Contact

☎ | 400-999-6126

✉ | [cn.market@abclonal.com.cn](mailto:cn.market@abclonal.com.cn)

🌐 | [www.abclonal.com.cn](http://www.abclonal.com.cn)

## Product Information

### Source

Rabbit

### Isotype

IgG

### Purification

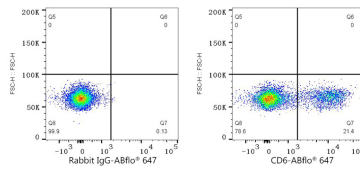
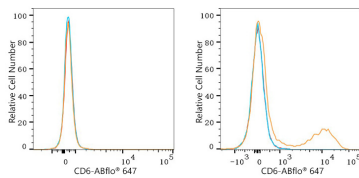
Affinity purification

### Storage

Store at 2-8°C. Avoid freeze.

Buffer: PBS containing 0.2% BSA, preserved with proclin300 or sodium azide (as specified on the Certificate of Analysis), pH 7.3.

## Validation Data



Flow cytometry:  $1 \times 10^6$  NIH/3T3 cells (negative control, left) and C57BL/6 mouse Splenocytes (right) were surface-stained with ABflo® 647 Rabbit anti-Mouse CD6 mAb (A25564, 5  $\mu$ l/Test, orange line) or ABflo® 647 Rabbit IgG isotype control (A22070, 5  $\mu$ l/Test, blue line). Non-fluorescently stained cells were used as blank control (red line).

Flow cytometry:  $1 \times 10^6$  C57BL/6 mouse Splenocytes were surface-stained with ABflo® 647 Rabbit IgG isotype control (A22070, 5  $\mu$ l/Test, left) or ABflo® 647 Rabbit anti-Mouse CD6 mAb (A25564, 5  $\mu$ l/Test, right).