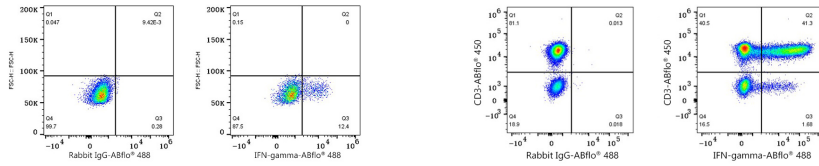




## Validation Data



Flow cytometry:  $1 \times 10^6$  Human PBMC (treated with TPA+Ionomycin+Brefeldin A) were intracellularly-stained with ABflo® 488 Rabbit IgG isotype control (A22069,5  $\mu$ l/Test,left) or ABflo® 488 Rabbit anti-Human IFN-gamma mAb (A25557,5  $\mu$ l/Test,right).

Flow cytometry:  $1 \times 10^6$  Cynomolgus PBMC (treated with 50 ng/mL PMA and 1  $\mu$ g/mL Ionomycin for 4-6 hours in the presence of monensin) were surface-stained with ABflo® 450 Rabbit anti-Human/Monkey CD3 mAb (A27177,5  $\mu$ l/Test) and then intracellularly-stained with ABflo® 488 Rabbit IgG isotype control (A22069,5  $\mu$ l/Test,left) or ABflo® 488 Rabbit anti-Human/Monkey IFN-gamma mAb (A25557,5  $\mu$ l/Test,right). Cells in the lymphocyte gate were used for analysis.