

CD162/PSGL-1 Rabbit mAb

Catalog No.: A25545 **Recombinant**

Basic Information

Observed MW

120kDa, 240 kDa

Calculated MW

43 kDa/45 kDa

Category

Primary antibody

Applications

WB,IF/ICC,FC,ELISA

Cross-Reactivity

Human

CloneNo number

ARC55292

Background

This gene encodes a glycoprotein that functions as a high affinity counter-receptor for the cell adhesion molecules P-, E- and L- selectin expressed on myeloid cells and stimulated T lymphocytes. As such, this protein plays a critical role in leukocyte trafficking during inflammation by tethering of leukocytes to activated platelets or endothelia expressing selectins. This protein requires two post-translational modifications, tyrosine sulfation and the addition of the sialyl Lewis x tetrasaccharide (sLex) to its O-linked glycans, for its high-affinity binding activity. Aberrant expression of this gene and polymorphisms in this gene are associated with defects in the innate and adaptive immune response. Alternate splicing results in multiple transcript variants.

Recommended Dilutions

WB 1:18000 - 1:60000

IF/ICC 1:100 - 1:1600

FC 1:50 - 1:200

ELISA Recommended starting concentration is 1 µg/mL. Please optimize the concentration based on your specific assay requirements.

Immunogen Information

Gene ID

6404

Swiss Prot

Q14242

Immunogen

Recombinant protein (or fragment). This information is considered to be commercially sensitive.

Synonyms

CLA; CD162; PSGL1; PSGL-1; CD162/PSGL-1

Contact

☎ | 400-999-6126

✉ | cn.market@abclonal.com.cn

🌐 | www.abclonal.com.cn

Product Information

Source

Rabbit

Isotype

IgG

Purification

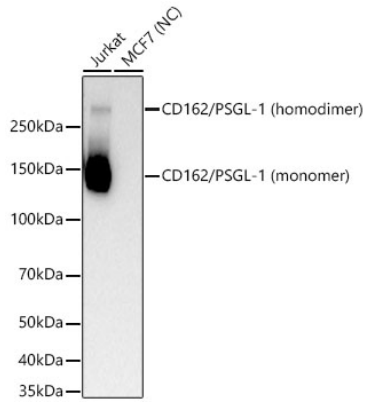
Affinity purification

Storage

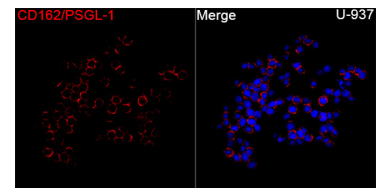
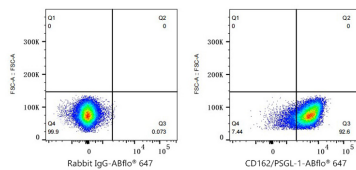
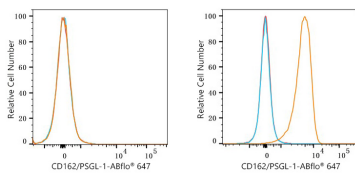
Store at -20°C. Avoid freeze / thaw cycles.

Buffer: PBS containing 50% glycerol and 0.05% BSA, preserved with proclin300 or sodium azide (as specified on the Certificate of Analysis), pH 7.3.

Validation Data



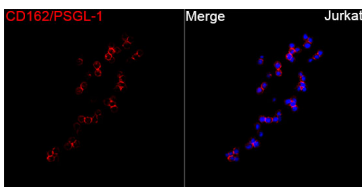
Western blot analysis of various lysates using CD162/PSGL-1 Rabbit mAb (A25545) at 1:30000 dilution. Secondary antibody: HRP-conjugated Goat anti-Rabbit IgG (H+L) (AS014) at 1:10000 dilution. Lysates/proteins: 25 µg per lane. Blocking buffer: 3% nonfat dry milk in TBST. Detection: ECL Basic Kit (RM00020). Negative control (NC): MCF7. Exposure time: 30s.



Flow cytometry: 1×10^6 MCF7 cells (negative control, left) and Jurkat cells (right) were surface-stained with CD162/PSGL-1 Rabbit mAb (A25545, 2 µg/mL, orange line) or Rabbit IgG isotype control (AC042, 2 µg/mL, blue line), followed by Alexa Fluor® 647 conjugated goat anti-rabbit pAb staining. Non-fluorescently stained cells were used as blank control (red line).

Flow cytometry: 1×10^6 Jurkat cells were surface-stained with Rabbit IgG isotype control (AC042, 2 µg/mL, left) or CD162/PSGL-1 Rabbit mAb (A25545, 2 µg/mL, right), followed by Alexa Fluor® 647 conjugated goat anti-rabbit pAb staining.

Immunofluorescence analysis of U-937 cells using CD162/PSGL-1 Rabbit mAb (A25545) at a dilution of 1:150 (40x lens). Secondary antibody: Cy3-conjugated Goat anti-Rabbit IgG (H+L) (AS007) at 1:500 dilution. Blue: DAPI for nuclear staining.



Immunofluorescence analysis of Jurkat cells using CD162/PSGL-1 Rabbit mAb (A25545) at a dilution of 1:150 (40x lens). Secondary antibody: Cy3-conjugated Goat anti-Rabbit IgG (H+L) (AS007) at 1:500 dilution. Blue: DAPI for nuclear staining.