

# Integrin alpha 5 (ITGA5/CD49e) Rabbit mAb

Catalog No.: A25544 **Recombinant**

## Basic Information

### Observed MW

Refer to figures

### Calculated MW

115kDa

### Category

Primary antibody

### Applications

ELISA,FC

### Cross-Reactivity

Human

### CloneNo number

ARC58294

## Background

The product of this gene belongs to the integrin alpha chain family. Integrins are heterodimeric integral membrane proteins composed of an alpha subunit and a beta subunit that function in cell surface adhesion and signaling. The encoded preproprotein is proteolytically processed to generate light and heavy chains that comprise the alpha 5 subunit. This subunit associates with the beta 1 subunit to form a fibronectin receptor. This integrin may promote tumor invasion, and higher expression of this gene may be correlated with shorter survival time in lung cancer patients. Note that the integrin alpha 5 and integrin alpha V subunits are encoded by distinct genes.

## Recommended Dilutions

FC 1:500 - 1:1000

## Immunogen Information

### Gene ID

3678

### Swiss Prot

P08648

### Immunogen

Recombinant fusion protein containing a sequence corresponding to amino acids 42-995 of human Integrin alpha 5 (ITGA5/CD49e) (NP\_002196.4).

### Synonyms

FNRA; CD49e; VLA-5; VLA5A

## Contact

 | 400-999-6126 | [cn.market@abclonal.com.cn](mailto:cn.market@abclonal.com.cn) | [www.abclonal.com.cn](http://www.abclonal.com.cn)

## Product Information

### Source

Rabbit

### Isotype

IgG

### Purification

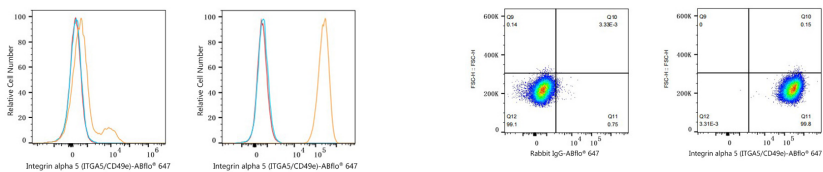
Affinity purification

### Storage

Store at -20°C. Avoid freeze / thaw cycles.

Buffer: PBS with 0.05% proclin300,0.05% BSA,50% glycerol,pH7.3.

# Validation Data



Flow cytometry: 1X10<sup>6</sup> SH-SY5Y cells (negative control, left) and U-87 MG cells (right) were surface-stained with Integrin alpha 5 (ITGA5/CD49e) Rabbit mAb (A25544, 2 µg/mL, orange line) or Rabbit IgG isotype control (AC042, 2 µg/mL, blue line), followed by Alexa Fluor® 647 conjugated goat anti-rabbit pAb staining. Non-fluorescently stained cells were used as blank control (red line).

Flow cytometry: 1X10<sup>6</sup> U-87 MG cells were surface-stained with Rabbit IgG isotype control (AC042, 2 µg/mL, left) or Integrin alpha 5 (ITGA5/CD49e) Rabbit mAb (A25544, 2 µg/mL, right), followed by Alexa Fluor® 647 conjugated goat anti-rabbit pAb staining.