

# CD10/MME Rabbit mAb

Catalog No.: A25540 **Recombinant**

## Basic Information

### Observed MW

Refer to figures

### Calculated MW

86kDa

### Category

Primary antibody

### Applications

ELISA,FC

### Cross-Reactivity

Human

### CloneNo number

ARC55330

## Background

The protein encoded by this gene is a type II transmembrane glycoprotein and a common acute lymphocytic leukemia antigen that is an important cell surface marker in the diagnosis of human acute lymphocytic leukemia (ALL). The encoded protein is present on leukemic cells of pre-B phenotype, which represent 85% of cases of ALL. This protein is not restricted to leukemic cells, however, and is found on a variety of normal tissues. The protein is a neutral endopeptidase that cleaves peptides at the amino side of hydrophobic residues and inactivates several peptide hormones including glucagon, enkephalins, substance P, neurotensin, oxytocin, and bradykinin.

## Recommended Dilutions

FC 1:500 - 1:1000

## Immunogen Information

### Gene ID

4311

### Swiss Prot

P08473

### Immunogen

Recombinant fusion protein containing a sequence corresponding to amino acids 52-750 of human CD10/MME (NP\_000893.2).

### Synonyms

NEP; SFE; CD10; CALLA; CMT2T; SCA43

## Contact

☎ | 400-999-6126

✉ | [cn.market@abclonal.com.cn](mailto:cn.market@abclonal.com.cn)

🌐 | [www.abclonal.com.cn](http://www.abclonal.com.cn)

## Product Information

### Source

Rabbit

### Isotype

IgG

### Purification

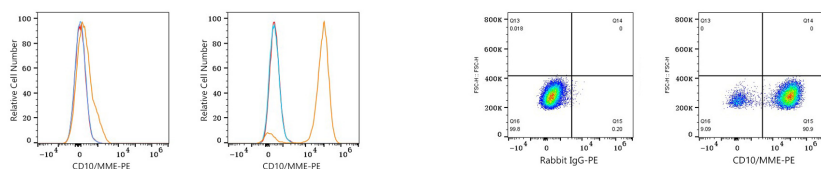
Affinity purification

### Storage

Store at -20°C. Avoid freeze / thaw cycles.

Buffer: PBS with 0.05% proclin300,0.05% BSA,50% glycerol,pH7.3.

## Validation Data



Flow cytometry:  $1 \times 10^6$  HEL cells (negative control, left) and U-138 MG cells (right) were surface-stained with CD10/MME Rabbit mAb (A25540, 2  $\mu\text{g/mL}$ , orange line) or Rabbit IgG isotype control (AC042, 2  $\mu\text{g/mL}$ , blue line), followed by PE Donkey anti-Rabbit pAb staining. Non-fluorescently stained cells were used as blank control (red line).

Flow cytometry:  $1 \times 10^6$  U-138 MG cells were surface-stained with Rabbit IgG isotype control (AC042, 2  $\mu\text{g/mL}$ , left) or CD10/MME Rabbit mAb (A25540, 2  $\mu\text{g/mL}$ , right), followed by PE Donkey anti-Rabbit pAb staining.