

CD16b Rabbit mAb

Catalog No.: A25539 **Recombinant**

Basic Information

Observed MW

40-45kDa

Calculated MW

26kDa

Category

Primary antibody

Applications

WB,FC,ELISA

Cross-Reactivity

Human

CloneNo number

ARC59988

Background

The protein encoded by this gene is a low affinity receptor for the Fc region of gamma immunoglobulins (IgG). The encoded protein acts as a monomer and can bind either monomeric or aggregated IgG. This gene may function to capture immune complexes in the peripheral circulation. Several transcript variants encoding different isoforms have been found for this gene. A highly-similar gene encoding a related protein is also found on chromosome 1.

Recommended Dilutions

WB 1:2000 - 1:4000

FC 1:500 - 1:1000

ELISA Recommended starting concentration is 1 µg/mL. Please optimize the concentration based on your specific assay requirements.

Immunogen Information

Gene ID

2215

Swiss Prot

O75015

Immunogen

Recombinant protein (or fragment). This information is considered to be commercially sensitive.

Synonyms

CD16; FCG3; CD16A; CD16b; FCGR3; CD16-I; FCGR3A; FCR-10; FCRIII; FCRIIIb

Contact

☎ | 400-999-6126

✉ | cn.market@abclonal.com.cn

🌐 | www.abclonal.com.cn

Product Information

Source

Rabbit

Isotype

IgG

Purification

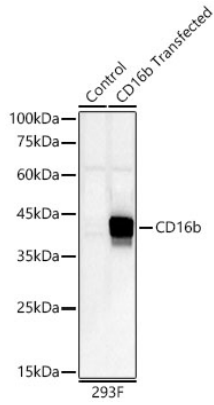
Affinity purification

Storage

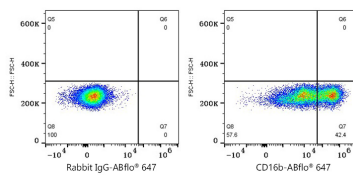
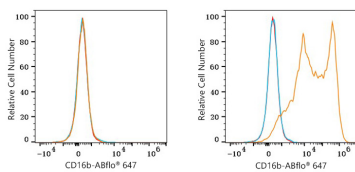
Store at -20°C. Avoid freeze / thaw cycles.

Buffer: PBS containing 50% glycerol and 0.05% BSA, preserved with proclin300 or sodium azide (as specified on the Certificate of Analysis), pH 7.3.

Validation Data



Western blot analysis of lysates from wild type (WT) and 293F cells transfected with CD16b using CD16b Rabbit mAb (A25539) at 1:4000 dilution.
 Secondary antibody: HRP-conjugated Goat anti-Rabbit IgG (H+L) (AS014) at 1:10000 dilution.
 Lysates/proteins: 25 µg per lane.
 Blocking buffer: 3% nonfat dry milk in TBST.
 Detection: ECL Basic Kit (RM00020).
 Exposure time: 180s.



Flow cytometry: 1×10^6 293T cells (negative control, left) and 293F (Transfection, right) cells (right) were surface-stained with CD16b Rabbit mAb (A25539, 2 µg/mL, orange line) or Rabbit IgG isotype control (AC042, 2 µg/mL, blue line), followed by Alexa Fluor® 647 conjugated goat anti-rabbit pAb staining. Non-fluorescently stained cells were used as blank control (red line).

Flow cytometry: 1×10^6 293F (Transfection) cells were surface-stained with Rabbit IgG isotype control (AC042, 2 µg/mL, left) or CD16b Rabbit mAb (A25539, 2 µg/mL, right), followed by Alexa Fluor® 647 conjugated goat anti-rabbit pAb staining.