

# CD27 Rabbit mAb

Catalog No.: A25534 **Recombinant**

## Basic Information

### Observed MW

Refer to figures

### Calculated MW

### Category

Primary antibody

### Applications

ELISA,FC

### Cross-Reactivity

Human

### CloneNo number

ARC54539

## Background

The protein encoded by this gene is a member of the TNF-receptor superfamily. This receptor is required for generation and long-term maintenance of T cell immunity. It binds to ligand CD70, and plays a key role in regulating B-cell activation and immunoglobulin synthesis. This receptor transduces signals that lead to the activation of NF-kappaB and MAPK8/JNK. Adaptor proteins TRAF2 and TRAF5 have been shown to mediate the signaling process of this receptor. CD27-binding protein (SIVA), a proapoptotic protein, can bind to this receptor and is thought to play an important role in the apoptosis induced by this receptor.

## Recommended Dilutions

FC 1:1000-1:5000

## Immunogen Information

### Gene ID

939

### Swiss Prot

P26842

### Immunogen

Recombinant fusion protein containing a sequence corresponding to amino acids 21-192 of human CD27 (NP\_001233.2).

### Synonyms

T14; S152; Tp55; TNFRSF7; S152. LPFS2; CD27

## Contact

☎ | 400-999-6126

✉ | [cn.market@abclonal.com.cn](mailto:cn.market@abclonal.com.cn)

🌐 | [www.abclonal.com.cn](http://www.abclonal.com.cn)

## Product Information

### Source

Rabbit

### Isotype

IgG

### Purification

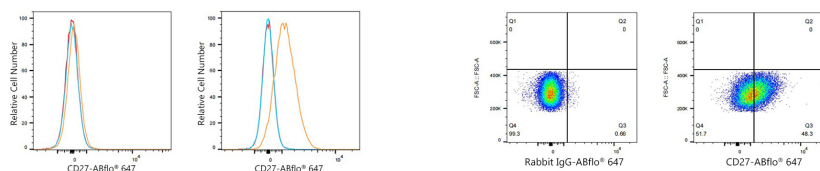
Affinity purification

### Storage

Store at -20°C. Avoid freeze / thaw cycles.

Buffer: PBS with 0.05% proclin300,0.05% BSA,50% glycerol,pH7.3.

## Validation Data



Flow cytometry:  $1 \times 10^6$  HEL cells (negative control, left) and Daudi cells (right) were surface-stained with CD27 Rabbit mAb (A25534, 2.5  $\mu\text{g}/\text{mL}$ , orange line) or Rabbit IgG isotype control (AC042, 2  $\mu\text{g}/\text{mL}$ , blue line), followed by Alexa Fluor® 647 conjugated goat anti-rabbit pAb staining. Non-fluorescently stained cells were used as blank control (red line).

Flow cytometry:  $1 \times 10^6$  Daudi cells were surface-stained with Rabbit IgG isotype control (AC042, 2  $\mu\text{g}/\text{mL}$ , left) or CD27 Rabbit mAb (A25534, 2.5  $\mu\text{g}/\text{mL}$ , right), followed by Alexa Fluor® 647 conjugated goat anti-rabbit pAb staining.