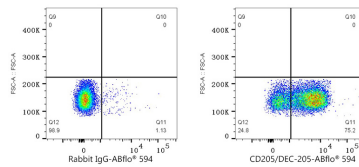
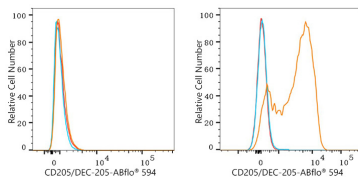


Validation Data



Flow cytometry: 1×10^6 RAW 264.7 cells (negative control, left) and C57BL/6 mouse bone marrow cells (right) were surface-stained with ABflo® 594 Rabbit anti-Mouse CD205/DEC-205 mAb (A25532,5 μ l/Test, orange line) or ABflo® 594 Rabbit IgG isotype control (A23821,5 μ l/Test, blue line). Non-fluorescently stained cells were used as blank control (red line).

Flow cytometry: 1×10^6 C57BL/6 mouse bone marrow cells were surface-stained with ABflo® 594 Rabbit IgG isotype control (,5 μ l/Test, left) or ABflo® 594 Rabbit anti-Mouse CD205/DEC-205 mAb (A25532,5 μ l/Test, right).