

# ABflo® 488 Rabbit anti-Mouse CD205/DEC-205 mAb

Catalog No.: A25530

## Basic Information

### Observed MW

Refer to figures

### Calculated MW

197kDa

### Category

Primary antibody

### Applications

FC

### Cross-Reactivity

Mouse

### CloneNo number

ARC65551

### Conjugate

ABflo® 488. Ex:491nm. Em:516nm.

## Recommended Dilutions

**FC** 5 µl per 10<sup>6</sup> cells in  
100 µl volume

## Background

Predicted to enable signaling receptor activity. Predicted to act upstream of or within endocytosis. Located in external side of plasma membrane. Is expressed in thymus and thymus primordium. Orthologous to several human genes including LY75-CD302 (LY75-CD302 readthrough).

## Immunogen Information

### Gene ID

17076

### Swiss Prot

Q60767

### Immunogen

Recombinant protein (or fragment). This information is considered to be commercially sensitive.

### Synonyms

CD205; DEC205; DEC-205

## Contact

 | 400-999-6126

 | [cn.market@abclonal.com.cn](mailto:cn.market@abclonal.com.cn)

 | [www.abclonal.com.cn](http://www.abclonal.com.cn)

## Product Information

### Source

Rabbit

### Isotype

IgG

### Purification

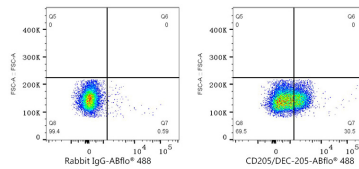
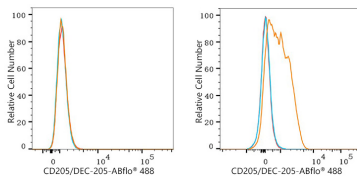
Affinity purification

### Storage

Store at 2-8°C. Avoid freeze.

Buffer: PBS containing 0.2% BSA, preserved with proclin300 or sodium azide (as specified on the Certificate of Analysis), pH 7.3.

## Validation Data



Flow cytometry:  $1 \times 10^6$  RAW 264.7 cells (negative control, left) and C57BL/6 mouse bone marrow cells (right) were surface-stained with ABflo® 488 Rabbit anti-Mouse CD205/DEC-205 mAb (A25530, 5  $\mu$ l/Test, orange line) or ABflo® 488 Rabbit IgG isotype control (A22069, 5  $\mu$ l/Test, blue line). Non-fluorescently stained cells were used as blank control (red line).

Flow cytometry:  $1 \times 10^6$  C57BL/6 mouse bone marrow cells were surface-stained with ABflo® 488 Rabbit IgG isotype control (A22069, 5  $\mu$ l/Test, left) or ABflo® 488 Rabbit anti-Mouse CD205/DEC-205 mAb (A25530, 5  $\mu$ l/Test, right).