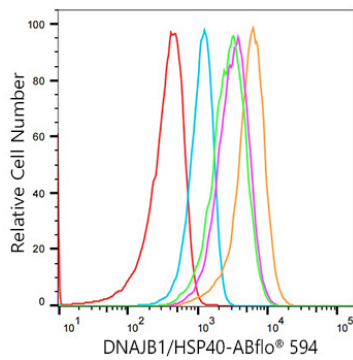


Validation Data



Flow cytometry: 1X10⁶ 293T-DNAJB1/HSP40-shRNA-1 cells (pink line) 293T-DNAJB1/HSP40-shRNA-2 cells (green line) and 293T-scramble cells (orange line) were intracellularly-stained with ABflo® 594 Rabbit anti-Human DNAJB1/HSP40 mAb (A25529,5 µl/Test) or ABflo® 594 Rabbit IgG isotype control (A23821,5 µl/Test,blue line). Non-fluorescently stained cells were used as blank control (red line).