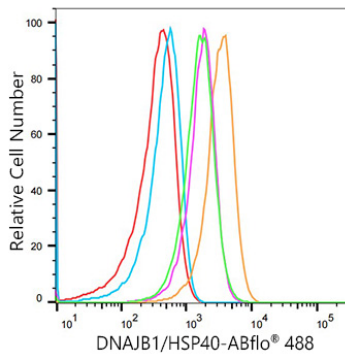




## Validation Data

---



Flow cytometry: 1X10<sup>6</sup> 293T-DNAJB1/HSP40-shRNA-1 cells (pink line) 293T-DNAJB1/HSP40-shRNA-2 cells (green line) and 293T-scramble cells (orange line) were intracellularly-stained with ABflo® 488 Rabbit anti-Human DNAJB1/HSP40 mAb (A25527,5 µl/Test) or ABflo® 488 Rabbit IgG isotype control (A22069,5 µl/Test,blue line). Non-fluorescently stained cells were used as blank control (red line).