

TAGLN Rabbit pAb

Catalog No.: A25499

Basic Information

Observed MW

23kDa

Calculated MW

23kDa

Category

Primary antibody

Applications

WB, IHC-P, ELISA

Cross-Reactivity

Human, Rat

Background

This gene encodes a shape change and transformation sensitive actin-binding protein which belongs to the calponin family. It is ubiquitously expressed in vascular and visceral smooth muscle, and is an early marker of smooth muscle differentiation. The encoded protein is thought to be involved in calcium-independent smooth muscle contraction. It acts as a tumor suppressor, and the loss of its expression is an early event in cell transformation and the development of some tumors, coinciding with cellular plasticity. The encoded protein has a domain architecture consisting of an N-terminal calponin homology (CH) domain and a C-terminal calponin-like (CLIK) domain. Mice with a knockout of the orthologous gene are viable and fertile but their vascular smooth muscle cells exhibit alterations in the distribution of the actin filament and changes in cytoskeletal organization.

Recommended Dilutions

WB 1:500 - 1:1000**IHC-P** 1:2000 - 1:10000

ELISA Recommended starting concentration is 1 µg/mL. Please optimize the concentration based on your specific assay requirements.

Immunogen Information

Gene ID

6876

Swiss Prot

Q01995

Immunogen

Synthetic peptide. This information is considered to be commercially sensitive.

Synonyms

SM22; SMCC; TAGLN1; WS3-10; SM22-alpha

Contact

 | 400-999-6126 | cn.market@abclonal.com.cn | www.abclonal.com.cn

Product Information

Source

Rabbit

Isotype

IgG

Purification

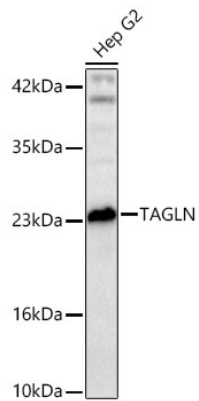
Affinity purification

Storage

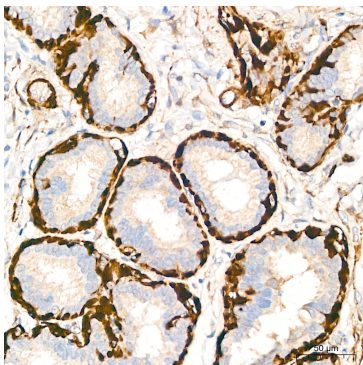
Store at -20°C. Avoid freeze / thaw cycles.

Buffer: PBS containing 50% glycerol, preserved with proclin300 or sodium azide (as specified on the Certificate of Analysis), pH 7.3.

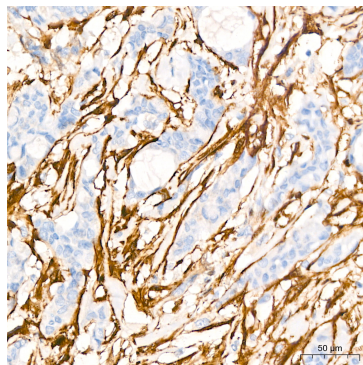
Validation Data



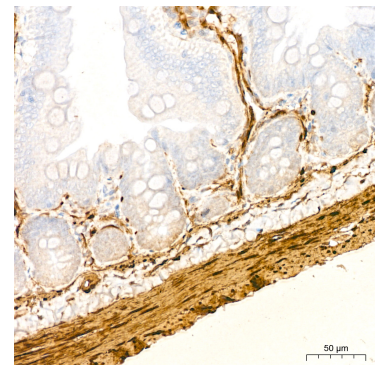
Western blot analysis of lysates from Hep G2 cells using TAGLN Rabbit pAb (A25499) at 1:1000 dilution. Secondary antibody: HRP-conjugated Goat anti-Rabbit IgG (H+L) (AS014) at 1:10000 dilution. Lysates/proteins: 25 µg per lane. Blocking buffer: 3% nonfat dry milk in TBST. Detection: ECL Basic Kit (RM00020). Exposure time: 10s.



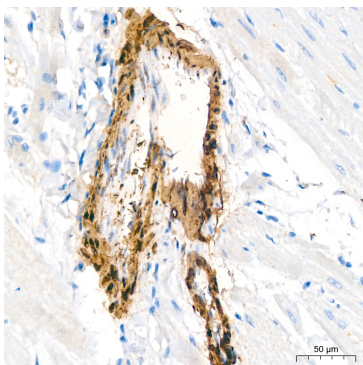
Immunohistochemistry analysis of paraffin-embedded Human breast tissue using TAGLN Rabbit pAb (A25499) at a dilution of 1:8000 (40x lens). High pressure antigen retrieval performed with 0.01M Citrate buffer (pH 6.0) prior to IHC staining.



Immunohistochemistry analysis of paraffin-embedded Human breast cancer tissue using TAGLN Rabbit pAb (A25499) at a dilution of 1:8000 (40x lens). High pressure antigen retrieval performed with 0.01M Citrate buffer (pH 6.0) prior to IHC staining.



Immunohistochemistry analysis of paraffin-embedded Rat colon tissue using TAGLN Rabbit pAb (A25499) at a dilution of 1:8000 (40x lens). High pressure antigen retrieval performed with 0.01M Citrate buffer (pH 6.0) prior to IHC staining.



Immunohistochemistry analysis of paraffin-embedded Rat heart tissue using TAGLN Rabbit pAb (A25499) at a dilution of 1:8000 (40x lens). High pressure antigen retrieval performed with 0.01M Citrate buffer (pH 6.0) prior to IHC staining.