

# ABflo® 488 Mouse IgG 1 isotype control

Catalog No.: A25487

## Basic Information

**Observed MW**

**Calculated MW**

**Category**

Primary antibody

**Applications**

FC

**Cross-Reactivity**

**CloneNo number**

AMC50005

**Conjugate**

ABflo® 488. Ex:491nm. Em:516nm.

## Background

## Recommended Dilutions

**FC** 5 µl per 10<sup>6</sup> cells in  
100 µl volume

## Immunogen Information

**Gene ID**


**Swiss Prot**

**Immunogen**

Recombinant protein (or fragment). This information is considered to be commercially sensitive.

**Synonyms**

## Contact

 | 400-999-6126

 | [cn.market@abclonal.com.cn](mailto:cn.market@abclonal.com.cn)

 | [www.abclonal.com.cn](http://www.abclonal.com.cn)

## Product Information

**Source**

Mouse

**Isotype**

IgG

**Purification**

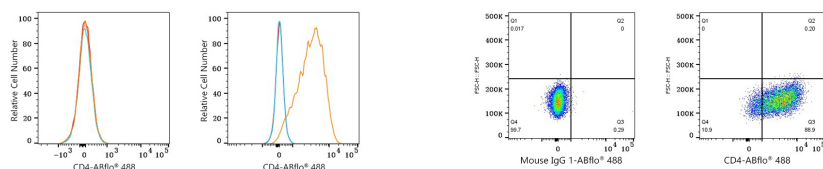
Affinity purification

**Storage**

Store at 2-8°C. Avoid freeze.

Buffer: PBS with 0.03% proclin300, pH7.3.

## Validation Data



Flow cytometry:  $1 \times 10^6$  Jurkat cells (negative control, left) and Daudi cells (right) were surface-stained with ABflo® 488 Mouse Anti-Human CD4 mAb (5  $\mu$ l/Test, orange line) or ABflo® 488 Mouse IgG 1 isotype control (A25487, 5  $\mu$ l/Test, blue line). Non-fluorescently stained cells were used as blank control (red line).

Flow cytometry:  $1 \times 10^6$  Daudi cells were surface-stained with ABflo® 488 Mouse IgG 1 isotype control (A25487, 5  $\mu$ l/Test, left) or ABflo® 488 Mouse Anti-Human CD4 mAb (5  $\mu$ l/Test, right).