

ABflo® 647 Rabbit anti-Mouse CD66a/CEACAM1a mAb

Catalog No.: A25477

Basic Information

Observed MW

Calculated MW

57kDa/50kDa/37kDa/30kDa

Category

Primary antibody

Applications

FC

Cross-Reactivity

Mouse

CloneNo number

ARC65927

Conjugate

ABflo® 647. Ex:648nm. Em:664nm.

Recommended Dilutions

FC 5 µl per 10⁶ cells in
100 µl volume

Background

Enables several functions, including signaling receptor binding activity; virion binding activity; and virus receptor activity. Involved in several processes, including common myeloid progenitor cell proliferation; granulocyte colony-stimulating factor signaling pathway; and negative regulation of macromolecule metabolic process. Acts upstream of or within several processes, including modulation by host of viral process; regulation of T cell activation; and regulation of intracellular signal transduction. Located in cell projection membrane; external side of plasma membrane; and extracellular space. Is expressed in several structures, including alimentary system; central nervous system; extraembryonic component; genitourinary system; and skeleton. Orthologous to several human genes including CEACAM1 (CEA cell adhesion molecule 1).

Immunogen Information

Gene ID

26365

Swiss Prot

P31809

Immunogen

Recombinant protein (or fragment). This information is considered to be commercially sensitive.

Synonyms

Bgp; Cc1; Hv2; Bgp1; Cea1; Cea7; Hv-2; MHVR; bb-1; C-CAM; CD66a; Cea-1; Cea-7; MHVR1; Mhv-1; mCEA1; mmCGM1; mmCGM2; mmCGM1a

Contact

☎ | 400-999-6126

✉ | cn.market@abclonal.com.cn

🌐 | www.abclonal.com.cn

Product Information

Source

Rabbit

Isotype

IgG

Purification

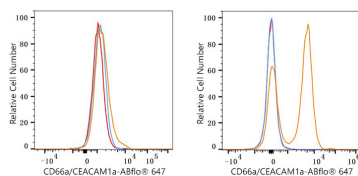
Affinity purification

Storage

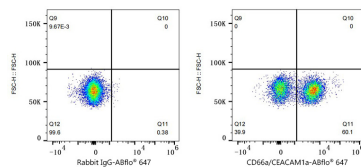
Store at 2-8°C. Avoid freeze.

Buffer: PBS containing 0.2% BSA, preserved with proclin300 or sodium azide (as specified on the Certificate of Analysis), pH 7.3.

Validation Data



Flow cytometry: 1×10^6 3T3-L1 cells (Low Expression, left) and C57BL/6 mouse Splenocytes (right) were surface-stained with ABflo® 647 Rabbit anti-Mouse CD66a/CEACAM1a mAb (A25477, 5 μ l/Test, orange line) or ABflo® 647 Rabbit IgG isotype control (A22070, 5 μ l/Test, blue line). Non-fluorescently stained cells were used as blank control (red line).



Flow cytometry: 1×10^6 C57BL/6 mouse Splenocytes were surface-stained with ABflo® 647 Rabbit IgG isotype control (A22070, 5 μ l/Test, left) or ABflo® 647 Rabbit anti-Mouse CD66a/CEACAM1a mAb (A25477, 5 μ l/Test, right).