

# MUC16/CA125 Rabbit mAb

**Catalog No.: A25455** Recombinant

## Basic Information

**Observed MW**

200-400kDa

**Calculated MW**

1519kDa

**Category**

Primary antibody

**Applications**

WB,IHC-P,IP,ELISA

**Cross-Reactivity**

Human

**CloneNo number**

ARC65896

## Background

This gene encodes a protein that is a member of the mucin family. Mucins are high molecular weight, O-glycosylated proteins that play an important role in forming a protective mucous barrier, and are found on the apical surfaces of the epithelia. The encoded protein is a membrane-tethered mucin that contains an extracellular domain at its amino terminus, a large tandem repeat domain, and a transmembrane domain with a short cytoplasmic domain. The amino terminus is highly glycosylated, while the repeat region contains 156 amino acid repeats unit that are rich in serines, threonines, and prolines. Interspersed within the repeats are Sea urchin sperm protein Enterokinase and Agrin (SEA) modules, leucine-rich repeats and ankyrin (ANK) repeats. These regions together form the ectodomain, and there is a potential cleavage site found near an SEA module close to the transmembrane domain. This protein is thought to play a role in forming a barrier, protecting epithelial cells from pathogens. Products of this gene have been used as a marker for different cancers, with higher expression levels associated with poorer outcomes.

## Recommended Dilutions

**WB** 1:2000 - 1:12000

**IHC-P** 1:200 - 1:800

**IP** 0.5µg-4µg antibody for  
200µg-400µg extracts of  
whole cells

**ELISA** Recommended starting  
concentration is 1 µg/mL.  
Please optimize the  
concentration based on  
your specific assay  
requirements.

## Immunogen Information

**Gene ID**

94025

**Swiss Prot**

Q8WXI7


**Immunogen**

Recombinant protein (or fragment). This information is considered to be commercially sensitive.

**Synonyms**

CA125; MUC16

## Contact

 | 400-999-6126

 | [cn.market@abclonal.com.cn](mailto:cn.market@abclonal.com.cn)
 | [www.abclonal.com.cn](http://www.abclonal.com.cn)

## Product Information

**Source**

Rabbit

**Isotype**

IgG

**Purification**

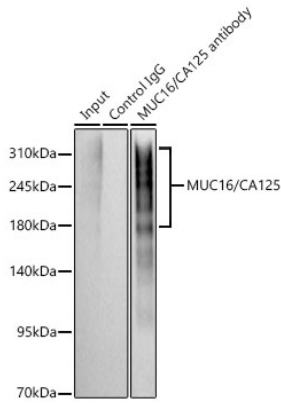
Affinity purification

**Storage**

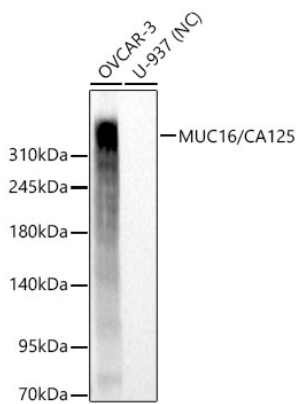
Store at -20°C. Avoid freeze / thaw cycles.

Buffer: PBS containing 50% glycerol and 0.05% BSA, preserved with proclin300 or sodium azide (as specified on the Certificate of Analysis), pH 7.3.

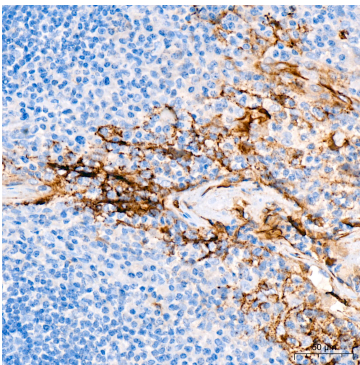
## Validation Data



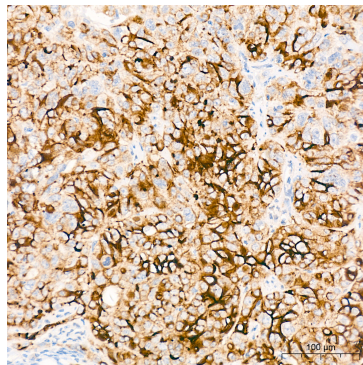
Immunoprecipitation of MUC16/CA125 in 200 µg extracts from OVCAR-3 cells using 0.5 µg MUC16/CA125 Rabbit mAb (A25455). Western blot analysis was performed using MUC16/CA125 Rabbit mAb (A25455) at 1:1000 dilution.



Western blot analysis of various lysates using MUC16/CA125 Rabbit mAb (A25455) at 1:2000 dilution. Secondary antibody: HRP-conjugated Goat anti-Rabbit IgG (H+L) (AS014) at 1:10000 dilution. Lysates/proteins: 25 µg per lane. Blocking buffer: 3% nonfat dry milk in TBST. Detection: ECL Basic Kit (RM00020). Negative control (NC): U-937. Exposure time: 20s.



Immunohistochemistry analysis of paraffin-embedded Human tonsil tissue using MUC16/CA125 Rabbit mAb (A25455) at a dilution of 1:200 (40x lens). High pressure antigen retrieval with 0.01 M Tris-EDTA buffer (pH 9.0) was performed prior to IHC staining.



Immunohistochemistry analysis of paraffin-embedded Human ovarian serous carcinoma tissue using MUC16/CA125 Rabbit mAb (A25455) at a dilution of 1:200 (40x lens). High pressure antigen retrieval with 0.01 M Tris-EDTA buffer (pH 9.0) was performed prior to IHC staining.