

ABflo® 594 Rabbit anti-Mouse CD79b mAb

Catalog No.: A25449

Basic Information

Observed MW

Refer to figures

Calculated MW

25kDa

Category

Primary antibody

Applications

FC

Cross-Reactivity

Mouse

CloneNo number

ARC66113

Conjugate

ABflo® 594. Ex:588nm. Em:604nm.

Recommended Dilutions

FC 5 µl per 10⁶ cells in
100 µl volume

Background

The B lymphocyte antigen receptor is a multimeric complex that includes the antigen-specific component, surface immunoglobulin (Ig). Surface Ig non-covalently associates with two other proteins, Ig-alpha and Ig-beta, which are necessary for expression and function of the B-cell antigen receptor. This gene encodes the Ig-beta protein of the B-cell antigen component. Alternatively spliced transcript variants encoding different isoforms have been described.

Immunogen Information

Gene ID

15985

Swiss Prot

P15530

Immunogen

Recombinant protein (or fragment). This information is considered to be commercially sensitive.

Synonyms

B29; Igb; Igbeta; Ig-beta

Contact

 | 400-999-6126

 | cn.market@abclonal.com.cn

 | www.abclonal.com.cn

Product Information

Source

Rabbit

Isotype

IgG

Purification

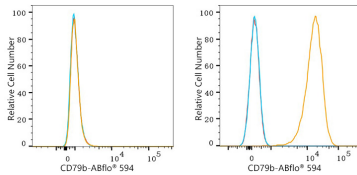
Affinity purification

Storage

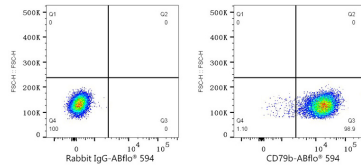
Store at 2-8°C. Avoid freeze.

Buffer: PBS containing 0.2% BSA, preserved with proclin300 or sodium azide (as specified on the Certificate of Analysis), pH 7.3.

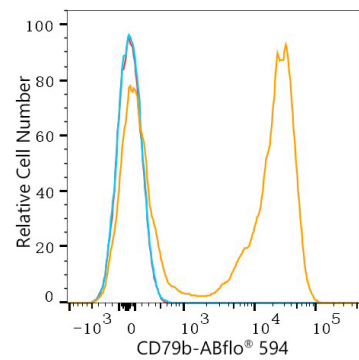
Validation Data



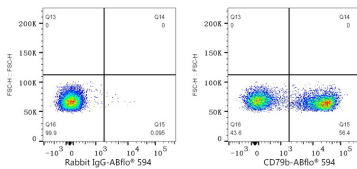
Flow cytometry: 1×10^6 C2C12 cells (negative control, left) and A20 cells (right) were surface-stained with ABflo® 594 Rabbit anti-Mouse CD79b mAb (A25449, 5 μ l/Test, orange line) or ABflo® 594 Rabbit IgG isotype control (A23821, 5 μ l/Test, blue line). Non-fluorescently stained cells were used as blank control (red line).



Flow cytometry: 1×10^6 A20 cells were surface-stained with ABflo® 594 Rabbit IgG isotype control (A23821, 5 μ l/Test, left) or ABflo® 594 Rabbit anti-Mouse CD79b mAb (A25449, 5 μ l/Test, right).



Flow cytometry: 1×10^6 C57BL/6 mouse Splenocytes were surface-stained with ABflo® 594 Rabbit anti-Mouse CD79b mAb (A25449, 5 μ l/Test, orange line) or ABflo® 594 Rabbit IgG isotype control (A23821, 5 μ l/Test, blue line). Non-fluorescently stained C57BL/6 mouse Splenocytes were used as blank control (red line).



Flow cytometry: 1×10^6 C57BL/6 mouse Splenocytes were surface-stained with ABflo® 594 Rabbit IgG isotype control (A23821, 5 μ l/Test, left) or ABflo® 594 Rabbit anti-Mouse CD79b mAb (A25449, 5 μ l/Test, right).