

CD34 Rabbit pAb

Catalog No.: A25441

Basic Information

Observed MW

100-120kDa

Calculated MW

41kDa

Category

Primary antibody

Applications

ELISA, WB, IHC-P, IF/ICC

Cross-Reactivity

Human

Background

The protein encoded by this gene may play a role in the attachment of stem cells to the bone marrow extracellular matrix or to stromal cells. This single-pass membrane protein is highly glycosylated and phosphorylated by protein kinase C. Two transcript variants encoding different isoforms have been found for this gene.

Recommended Dilutions

WB	1:500 - 1:1000
IHC-P	1:500 - 1:1000
IF/ICC	1:50 - 1:200

Immunogen Information

Gene ID

947

Swiss Prot

P28906

Immunogen

Recombinant fusion protein containing a sequence corresponding to amino acids 32-290 of human CD34 (NP_001020280.1).

Synonyms

CD34; CD34 molecule; GIG3; MORT1

Contact

	400-999-6126
	cn.market@abclonal.com.cn
	www.abclonal.com.cn

Product Information

Source

Rabbit

Isotype

IgG

Purification

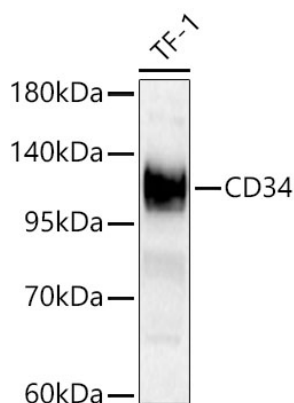
Affinity purification

Storage

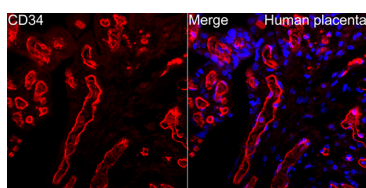
Store at -20°C. Avoid freeze / thaw cycles.

Buffer: PBS with 0.05% proclin300, 50% glycerol, pH7.3.

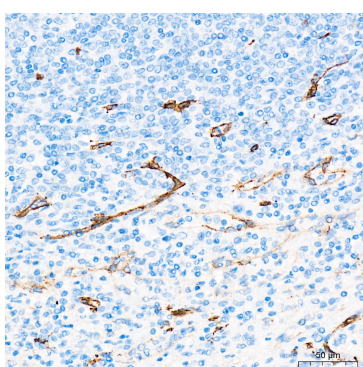
Validation Data



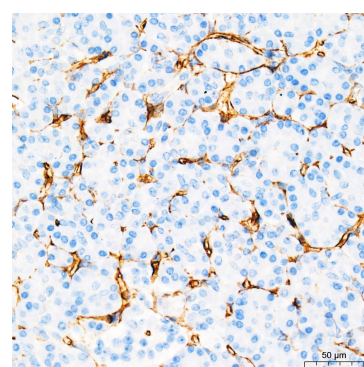
Western blot analysis of lysates from TF-1 cells using CD34 Rabbit pAb(A25441) at 1:1000 dilution. Secondary antibody:HRP Goat Anti-Rabbit IgG (H+L)(A5014) at 1:10000 dilution. Lysates/proteins: 25 µg per lane. Blocking buffer: 3% nonfat dry milk in TBST. Detection:ECL Basic Kit (RM00020). Exposure time:30s.



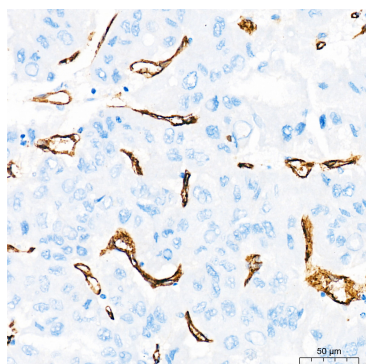
Immunofluorescence analysis of paraffin-embedded Human placenta tissue using CD34 Rabbit pAb(A25441) at a dilution of 1:100 (40x lens). Secondary antibody: Cy3 Goat Anti-Rabbit IgG (H+L)(A5007) at 1:500 dilution. Blue: DAPI for nuclear staining. Perform high pressure antigen retrieval with 0.01 M citrate buffer (pH 6.0) prior to IF staining.



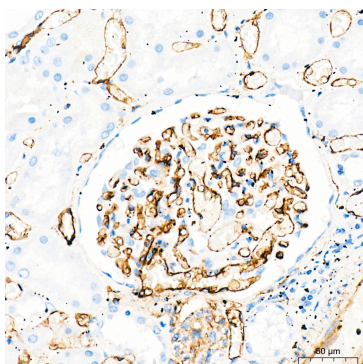
Immunohistochemistry analysis of CD34 in paraffin-embedded human spleen tissue using CD34 Rabbit pAb (A25441) at a dilution of 1:1000 (40x lens). High pressure antigen retrieval was performed with 0.01 M Tris-EDTA buffer (pH 9.0) prior to IHC staining.



Immunohistochemistry analysis of CD34 in paraffin-embedded human pancreas tissue using CD34 Rabbit pAb (A25441) at a dilution of 1:1000 (40x lens). High pressure antigen retrieval was performed with 0.01 M Tris-EDTA buffer (pH 9.0) prior to IHC staining.



Immunohistochemistry analysis of CD34 in paraffin-embedded human liver cancer tissue using CD34 Rabbit pAb (A25441) at a dilution of 1:1000 (40x lens). High pressure antigen retrieval was performed with 0.01 M Tris-EDTA buffer (pH 9.0) prior to IHC staining.



Immunohistochemistry analysis of CD34 in paraffin-embedded human kidney tissue using CD34 Rabbit pAb (A25441) at a dilution of 1:1000 (40x lens). High pressure antigen retrieval was performed with 0.01 M Tris-EDTA buffer (pH 9.0) prior to IHC staining.