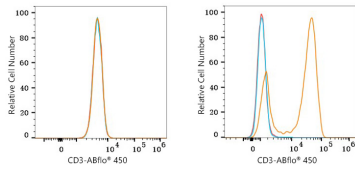


Validation Data



Flow cytometry: 1×10^6 Raji cells (negative control, left) and Human PBMC (right) were surface-stained with ABflo® 450 Mouse anti-Human CD3 mAb (A25189, 5 μ l/Test, orange line) or ABflo® 450 Mouse IgG 2a isotype control (A25417, 5 μ l/Test, blue line). Non-fluorescently stained cells were used as blank control (red line).