

# Mki67 Rabbit pAb

Catalog No.: A25399 **4 Publications**

## Basic Information

### Observed MW

Refer to figures

### Calculated MW

350kDa

### Category

Primary antibody

### Applications

IF-P,IHC-P,ELISA

### Cross-Reactivity

Mouse, Rat

## Background

Predicted to enable protein C-terminus binding activity. Involved in regulation of chromatin organization. Acts upstream of or within cholangiocyte proliferation; hepatocyte proliferation; and meiotic cell cycle. Located in chromosome; cytoplasm; and nucleolus. Is expressed in several structures, including alimentary system; brain; genitourinary system; sensory organ; and skin. Human ortholog(s) of this gene implicated in Crohn's disease; breast cancer; human immunodeficiency virus infectious disease; and pancreatic cancer. Orthologous to human MKI67 (marker of proliferation Ki-67).

## Recommended Dilutions

**IF-P** 1:50 - 1:200

**IHC-P** 1:2000 - 1:8000

**ELISA** Recommended starting concentration is 1 µg/mL. Please optimize the concentration based on your specific assay requirements.

## Immunogen Information

### Gene ID

17345

### Swiss Prot

E9PVX6

### Immunogen

Recombinant protein (or fragment). This information is considered to be commercially sensitive.

### Synonyms

Ki67; Ki-67; D630048A14Rik

## Contact

☎ | 400-999-6126

✉ | [cn.market@abclonal.com.cn](mailto:cn.market@abclonal.com.cn)

🌐 | [www.abclonal.com.cn](http://www.abclonal.com.cn)

## Product Information

### Source

Rabbit

### Isotype

IgG

### Purification

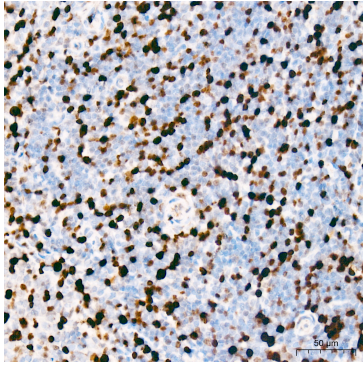
Affinity purification

### Storage

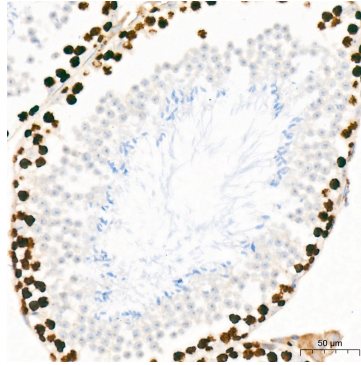
Store at -20°C. Avoid freeze / thaw cycles.

Buffer: PBS containing 50% glycerol, preserved with proclin300 or sodium azide (as specified on the Certificate of Analysis), pH 7.3.

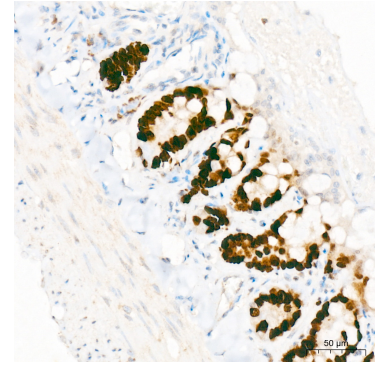
## Validation Data



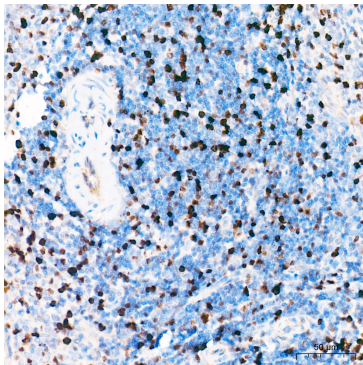
Immunohistochemistry analysis of paraffin-embedded Mouse spleen tissue using Mki67 Rabbit pAb (A25399) at a dilution of 1:8000 (40x lens). High pressure antigen retrieval performed with 0.01M Citrate Buffer (pH 6.0) prior to IHC staining.



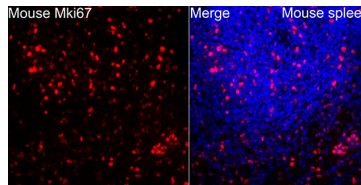
Immunohistochemistry analysis of paraffin-embedded Mouse testis tissue using Mki67 Rabbit pAb (A25399) at a dilution of 1:8000 (40x lens). High pressure antigen retrieval performed with 0.01M Citrate Buffer (pH 6.0) prior to IHC staining.



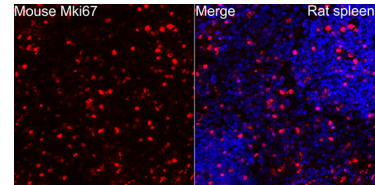
Immunohistochemistry analysis of paraffin-embedded rat colon tissue using Mki67 Rabbit pAb (A25399) at a dilution of 1:8000 (40x lens). High pressure antigen retrieval performed with 0.01M Citrate Buffer (pH 6.0) prior to IHC staining.



Immunohistochemistry analysis of paraffin-embedded rat spleen tissue using Mki67 Rabbit pAb (A25399) at a dilution of 1:8000 (40x lens). High pressure antigen retrieval performed with 0.01M Citrate Buffer (pH 6.0) prior to IHC staining.



Immunofluorescence analysis of paraffin-embedded Mouse spleen tissue using Mouse Mki67 Rabbit pAb (A25399) at a dilution of 1:100 (40x lens). Secondary antibody: Cy3-conjugated Goat anti-Rabbit IgG (H+L) (AS007) at 1:500 dilution. Blue: DAPI for nuclear staining. Perform high pressure antigen retrieval with 0.01 M citrate buffer (pH 6.0) prior to IF staining.



Immunofluorescence analysis of paraffin-embedded Rat spleen tissue using Mouse Mki67 Rabbit pAb (A25399) at a dilution of 1:100 (40x lens). Secondary antibody: Cy3-conjugated Goat anti-Rabbit IgG (H+L) (AS007) at 1:500 dilution. Blue: DAPI for nuclear staining. Perform high pressure antigen retrieval with 0.01 M citrate buffer (pH 6.0) prior to IF staining.