

IL-17RB Rabbit mAb

Catalog No.: A25361 **Recombinant**

Basic Information

Observed MW

Refer to figures

Calculated MW

56kDa

Category

Primary antibody

Applications

FC,ELISA

Cross-Reactivity

Human

CloneNo number

ARC62205

Background

The protein encoded by this gene is a cytokine receptor. This receptor specifically binds to IL17B and IL17E, but does not bind to IL17 and IL17C. This receptor has been shown to mediate the activation of NF-kappaB and the production of IL8 induced by IL17E. The expression of the rat counterpart of this gene was found to be significantly up-regulated during intestinal inflammation, which suggested the immunoregulatory activity of this receptor.

Recommended Dilutions

FC 1:500 - 1:1000

ELISA Recommended starting concentration is 1 µg/mL. Please optimize the concentration based on your specific assay requirements.

Immunogen Information

Gene ID

55540

Swiss Prot

Q9NRM6

Immunogen

Recombinant protein (or fragment). This information is considered to be commercially sensitive.

Synonyms

CRL4; EVI27; IL17BR; IL17RH1

Contact

 | 400-999-6126

 | cn.market@abclonal.com.cn

 | www.abclonal.com.cn

Product Information

Source

Rabbit

Isotype

IgG

Purification

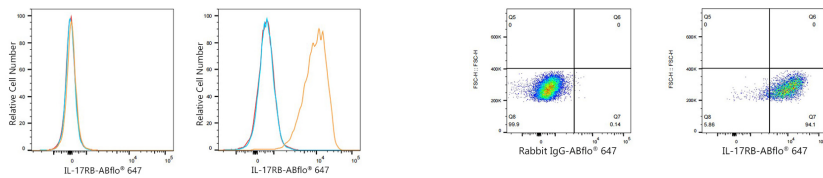
Affinity purification

Storage

Store at -20°C. Avoid freeze / thaw cycles.

Buffer: PBS containing 50% glycerol and 0.05% BSA, preserved with proclin300 or sodium azide (as specified on the Certificate of Analysis), pH 7.3.

Validation Data



Flow cytometry: 1×10^6 MOLT-4 cells (negative control, left) and Hep G2 cells (right) were surface-stained with IL-17RB Rabbit mAb (A25361,2 $\mu\text{g}/\text{mL}$, orange line) or ABflo® 647 Rabbit IgG isotype control (A22070,5 $\mu\text{l}/\text{Test}$, blue line), followed by Alexa Fluor® 647 conjugated goat anti-rabbit pAb staining. Non-fluorescently stained cells were used as blank control (red line).

Flow cytometry: 1×10^6 Hep G2 cells were surface-stained with ABflo® 647 Rabbit IgG isotype control (A22070,5 $\mu\text{l}/\text{Test}$, left) or IL-17RB Rabbit mAb (A25361,2 $\mu\text{g}/\text{mL}$, right).