

ABflo® 594 Rabbit anti-Human CD228/MFI2 mAb

Catalog No.: A25350

Basic Information

Observed MW

Calculated MW

32kDa/80kDa

Category

Primary antibody

Applications

FC

Cross-Reactivity

Human

CloneNo number

ARC66603

Conjugate

ABflo® 594. Ex:588nm. Em:604nm.

Recommended Dilutions

FC 5 µl per 10⁶ cells in
100 µl volume

Background

The protein encoded by this gene is a cell-surface glycoprotein found on melanoma cells. The protein shares sequence similarity and iron-binding properties with members of the transferrin superfamily. The importance of the iron binding function has not yet been identified. This gene resides in the same region of chromosome 3 as members of the transferrin superfamily. Alternative splicing results in two transcript variants.

Immunogen Information

Gene ID

4241

Swiss Prot

P08582

Immunogen

Recombinant protein (or fragment). This information is considered to be commercially sensitive.

Synonyms

MTf; MFI2; MTF1; CD228; MAP97

Contact

 | 400-999-6126

 | cn.market@abclonal.com.cn

 | www.abclonal.com.cn

Product Information

Source

Rabbit

Isotype

IgG

Purification

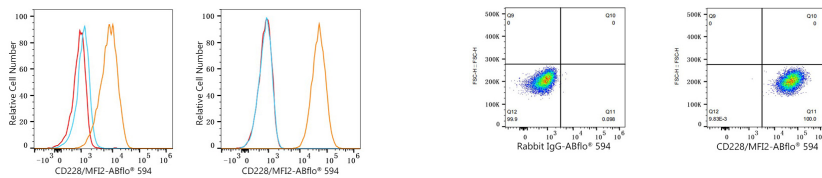
Affinity purification

Storage

Store at 2-8°C. Avoid freeze.

Buffer: PBS containing 0.2% BSA, preserved with proclin300 or sodium azide (as specified on the Certificate of Analysis), pH 7.3.

Validation Data



Flow cytometry: 1×10^6 HUVEC cells (Low Expression, left) and A-375 cells (right) were surface-stained with ABflo® 594 Rabbit anti-Human CD228/MFI2 mAb (A25350, 5 μ l/Test, orange line) or ABflo® 594 Rabbit IgG isotype control (A23821, 5 μ l/Test, blue line). Non-fluorescently stained cells were used as blank control (red line).

Flow cytometry: 1×10^6 A-375 cells were surface-stained with ABflo® 594 Rabbit IgG isotype control (A23821, 5 μ l/Test, left) or ABflo® 594 Rabbit anti-Human CD228/MFI2 mAb (A25350, 5 μ l/Test, right).