

# CD326/EpCAM Rabbit mAb

Catalog No.: A25344 **Recombinant** **1 Publications**

## Basic Information

### Observed MW

35-40 kDa

### Calculated MW

35 kDa

### Category

Primary antibody

### Applications

WB,IF-P,IHC-P,ELISA

### Cross-Reactivity

Human, Mouse, Rat

### CloneNo number

ARC65853

## Background

Predicted to enable cadherin binding activity involved in cell-cell adhesion. Acts upstream of or within ureteric bud development. Located in cell surface. Is expressed in several structures, including alimentary system; central nervous system; genitourinary system; respiratory system; and sensory organ. Used to study congenital diarrhea 5 with tufting enteropathy. Human ortholog(s) of this gene implicated in congenital diarrhea 5 with tufting enteropathy and hereditary nonpolyposis colorectal cancer type 8. Orthologous to human EPCAM (epithelial cell adhesion molecule).

## Recommended Dilutions

<b>WB</b>	1:3000 - 1:12000
<b>IF-P</b>	1:200 - 1:2000
<b>IHC-P</b>	1:500 - 1:5000
<b>ELISA</b>	Recommended starting concentration is 1 µg/mL. Please optimize the concentration based on your specific assay requirements.

## Immunogen Information

### Gene ID

17075

### Swiss Prot

Q99JW5

### Immunogen

Recombinant protein (or fragment). This information is considered to be commercially sensitive.

### Synonyms

EGP; Ly74; gp40; CD326; EGP-2; TROP1; Egp314; Ep-CAM; EpCAM1; Tacsd1; GA733-2; Tacstd1

## Contact

	400-999-6126
	cn.market@abclonal.com.cn
	www.abclonal.com.cn

## Product Information

### Source

Rabbit

### Isotype

IgG

### Purification

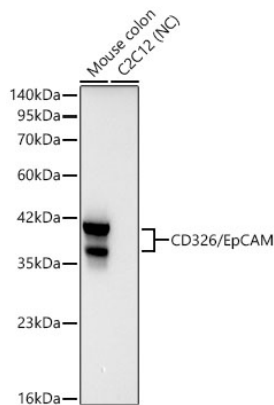
Affinity purification

### Storage

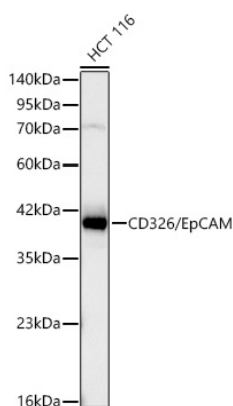
Store at -20°C. Avoid freeze / thaw cycles.

Buffer: PBS containing 50% glycerol and 0.05% BSA, preserved with proclin300 or sodium azide (as specified on the Certificate of Analysis), pH 7.3.

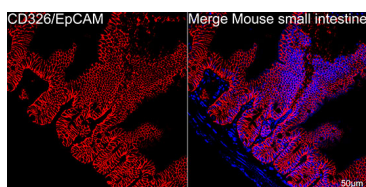
## Validation Data



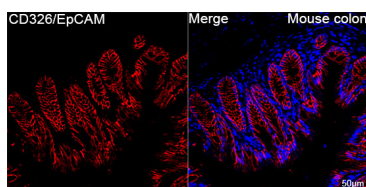
Western blot analysis of various lysates using CD326/EpCAM Rabbit mAb (A25344) at 1:3000 dilution incubated overnight at 4°C.  
 Secondary antibody: HRP-conjugated Goat anti-Rabbit IgG (H+L) (AS014) at 1:10000 dilution.  
 Lysates/proteins: 25 µg per lane.  
 Blocking buffer: 3% nonfat dry milk in TBST.  
 Detection: ECL Basic Kit (RM00020).  
 Negative control (NC): C2C12.  
 Exposure time: 20 s.



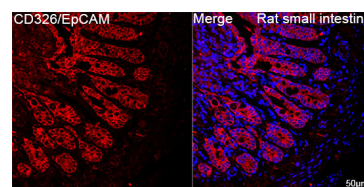
Western blot analysis of lysates from HCT 116 cells using CD326/EpCAM Rabbit mAb (A25344) at 1:3000 dilution incubated overnight at 4°C.  
 Secondary antibody: HRP-conjugated Goat anti-Rabbit IgG (H+L) (AS014) at 1:10000 dilution.  
 Lysates/proteins: 25 µg per lane.  
 Blocking buffer: 3% nonfat dry milk in TBST.  
 Detection: ECL Basic Kit (RM00020).  
 Exposure time: 45 s.



Confocal imaging of paraffin-embedded Mouse small intestine tissue using CD326/EpCAM Rabbit mAb (A25344, dilution 1:200) followed by a further incubation with Cy3 Goat Anti-Rabbit IgG (H+L) (AS007, dilution 1:500) (Red). DAPI was used for nuclear staining (Blue). Perform high pressure antigen retrieval with 0.01 M citrate buffer (pH 6.0) prior to IF staining. Objective: 40x.



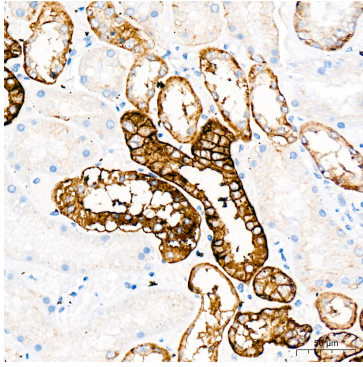
Confocal imaging of paraffin-embedded Mouse colon tissue using CD326/EpCAM Rabbit mAb (A25344, dilution 1:200) followed by a further incubation with Cy3 Goat Anti-Rabbit IgG (H+L) (AS007, dilution 1:500) (Red). DAPI was used for nuclear staining (Blue). High pressure antigen retrieval performed with 0.01M Citrate Buffer (pH 6.0) prior to IF staining. Objective: 40x.



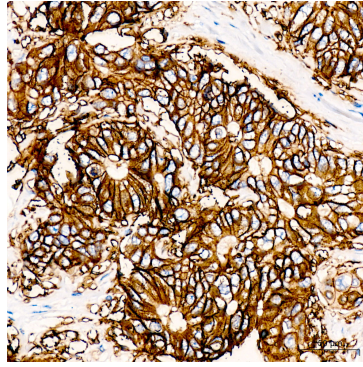
Confocal imaging of paraffin-embedded Rat small intestine tissue using CD326/EpCAM Rabbit mAb (A25344, dilution 1:200) followed by a further incubation with Cy3 Goat Anti-Rabbit IgG (H+L) (AS007, dilution 1:500) (Red). DAPI was used for nuclear staining (Blue). High pressure antigen retrieval performed with 0.01M Citrate Buffer (pH 6.0) prior to IF staining. Objective: 40x.

## Validation Data

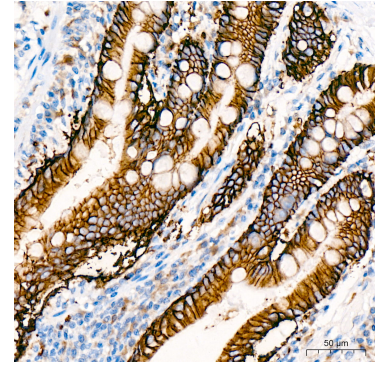
---



Immunohistochemistry analysis of paraffin-embedded Human kidney tissue using CD326/EpCAM Rabbit mAb (A25344) at a dilution of 1:1000 (40x lens). High pressure antigen retrieval was performed with 0.01 M citrate buffer (pH 6.0) prior to IHC staining.



Immunohistochemistry analysis of paraffin-embedded Human colon carcinoma tissue using CD326/EpCAM Rabbit mAb (A25344) at a dilution of 1:1000 (40x lens). High pressure antigen retrieval was performed with 0.01 M citrate buffer (pH 6.0) prior to IHC staining.



Immunohistochemistry analysis of paraffin-embedded Human small intestine tissue using CD326/EpCAM Rabbit mAb (A25344) at a dilution of 1:1000 (40x lens). High pressure antigen retrieval was performed with 0.01 M citrate buffer (pH 6.0) prior to IHC staining.