

# Caspase-3 Rabbit mAb

Catalog No.: A25309

Recombinant

3 Publications

## Basic Information

### Observed MW

32kDa/17,19kDa/17,19kDa,35kDa/17/19/35kDa

### Calculated MW

32kDa

### Category

Primary antibody

### Applications

ELISA, WB, IHC-P

### Cross-Reactivity

Human

### CloneNo number

ARC3244

## Background

The protein encoded by this gene is a cysteine-aspartic acid protease that plays a central role in the execution-phase of cell apoptosis. The encoded protein cleaves and inactivates poly(ADP-ribose) polymerase while it cleaves and activates sterol regulatory element binding proteins as well as caspases 6, 7, and 9. This protein itself is processed by caspases 8, 9, and 10. It is the predominant caspase involved in the cleavage of amyloid-beta 4A precursor protein, which is associated with neuronal death in Alzheimer's disease.

## Recommended Dilutions

WB 1:1000 - 1:5000

IHC-P 1:50 - 1:200

## Immunogen Information

### Gene ID

836

### Swiss Prot

P42574

### Immunogen

A synthetic peptide corresponding to a sequence within amino acids 50-150 of human Caspase-3 (NP\_004337.2).

### Synonyms

CPP32; SCA-1; CPP32B; Caspase-3

## Contact

☎ | 400-999-6126

✉ | [cn.market@abclonal.com.cn](mailto:cn.market@abclonal.com.cn)

🌐 | [www.abclonal.com.cn](http://www.abclonal.com.cn)

## Product Information

### Source

Rabbit

### Isotype

IgG

### Purification

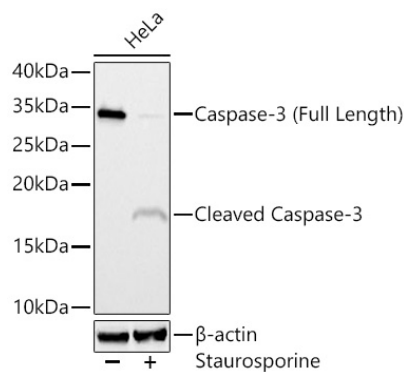
Affinity purification

### Storage

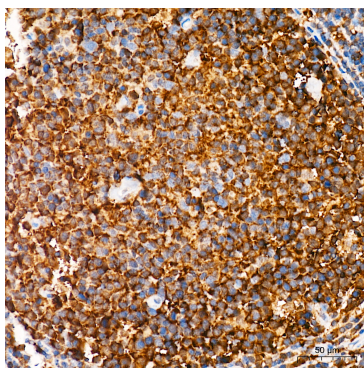
Store at -20°C. Avoid freeze / thaw cycles.

Buffer: PBS with 0.05% proclin300, 0.05% BSA, 50% glycerol, pH7.3.

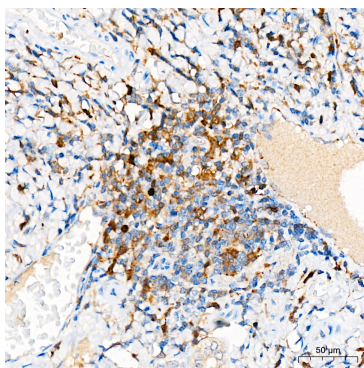
## Validation Data



Western blot analysis of lysates from HAP1 cells using Caspase-3 Rabbit mAb(A25309) at 1:5000 dilution.  
Secondary antibody: HRP Goat Anti-Rabbit IgG (H+L) (AS014) at 1:10000 dilution.  
Lysates/proteins: 25  $\mu$ g per lane.  
Blocking buffer: 3% nonfat dry milk in TBST.  
Detection: ECL Basic Kit (RM00020).  
Exposure time: 30s.



Immunohistochemistry analysis of paraffin-embedded Human tonsil tissue using Caspase-3 Rabbit mAb (A25309) at a dilution of 1:100 (40x lens). High pressure antigen retrieval was performed with 0.01 M citrate buffer (pH 6.0) prior to IHC staining.



Immunohistochemistry analysis of paraffin-embedded Human liver tissue using Caspase-3 Rabbit mAb (A25309) at a dilution of 1:100 (40x lens). High pressure antigen retrieval was performed with 0.01 M citrate buffer (pH 6.0) prior to IHC staining.