

CD301/CLEC10A Rabbit mAb

Catalog No.: A25284 **Recombinant**

Basic Information

Observed MW

Refer to figures

Calculated MW

28kDa/32kDa/35kDa

Category

Primary antibody

Applications

ELISA,FC

Cross-Reactivity

Human

CloneNo number

ARC61381

Background

This gene encodes a member of the C-type lectin/C-type lectin-like domain (CTL/CTLD) superfamily. Members of this family share a common protein fold and have diverse functions, such as cell adhesion, cell-cell signalling, glycoprotein turnover, and roles in inflammation and immune response. The encoded type 2 transmembrane protein may function as a cell surface antigen. Two transcript variants encoding distinct isoforms have been identified for this gene.

Recommended Dilutions

FC 1:500 - 1:1000

Immunogen Information

Gene ID

10462

Swiss Prot

Q8IUN9

Immunogen

Recombinant fusion protein containing a sequence corresponding to amino acids 61-316 of human CD301/CLEC10A (NP_878910.1).

Synonyms

HML; MGL; HML2; CD301; CLECSF13; CLECSF14; CD301/CLEC10A

Contact

☎ | 400-999-6126

✉ | cn.market@abclonal.com.cn

🌐 | www.abclonal.com.cn

Product Information

Source

Rabbit

Isotype

IgG

Purification

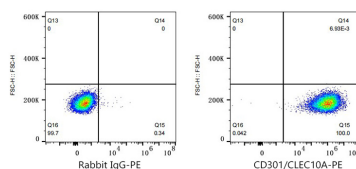
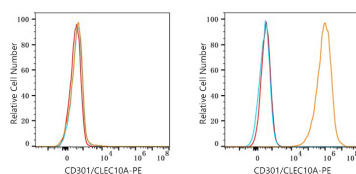
Affinity purification

Storage

Store at -20°C. Avoid freeze / thaw cycles.

Buffer: PBS with 0.05% proclin300,0.05% BSA,50% glycerol,pH7.3.

Validation Data



Flow cytometry: 1×10^6 293F cells (negative control, left) and 293F (Transfection, right) cells were surface-stained with CD301/CLEC10A Rabbit mAb (A25284, 2 $\mu\text{g}/\text{mL}$, orange line) or PE Rabbit IgG isotype control (A24172, 5 $\mu\text{l}/\text{Test}$, blue line), followed by PE conjugated Donkey anti-rabbit pAb staining. Non-fluorescently stained cells were used as blank control (red line).

Flow cytometry: 1×10^6 293F (Transfection) cells were surface-stained with PE Rabbit IgG isotype control (A24172, 5 $\mu\text{l}/\text{Test}$, left) or CD301/CLEC10A Rabbit mAb (A25284, 2 $\mu\text{g}/\text{mL}$, right).