

CD34 Rabbit mAb

Catalog No.: A25283 **Recombinant**

Basic Information

Observed MW

Calculated MW
35kDa/41kDa

Category
Primary antibody

Applications
ELISA,FC

Cross-Reactivity
Human

CloneNo number
ARC66055

Background

Enables sulfate binding activity. Acts upstream of or within leukocyte migration. Located in cytoplasm; external side of plasma membrane; and extracellular region. Is expressed in several structures, including alimentary system; cardiovascular system; extraembryonic component; genitourinary system; and skin. Orthologous to human CD34 (CD34 molecule).

Recommended Dilutions

FC 1:500 - 1:1000

Immunogen Information

Gene ID	Swiss Prot
947	P28906

Immunogen

Recombinant fusion protein containing a sequence corresponding to amino acids 32-290 of human CD34 (NP_001020280.1).

Synonyms

CD34;CD34 molecule;GIG3;MORT1

Contact

 | 400-999-6126
 | cn.market@abclonal.com.cn
 | www.abclonal.com.cn

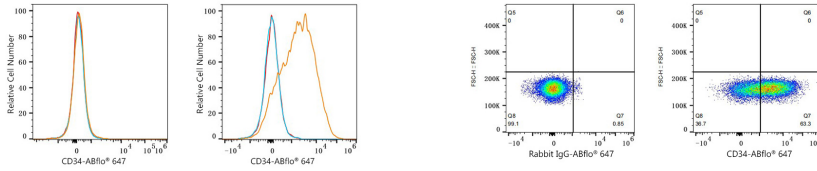
Product Information

Source	Isotype	Purification
Rabbit	IgG	Affinity purification

Storage

Store at -20°C. Avoid freeze / thaw cycles.
Buffer: PBS with 0.05% proclin300,0.05% BSA,50% glycerol,pH7.3.

Validation Data



Flow cytometry: 1×10^6 A549 cells (negative control, left) and MOLT-4 cells (right) were surface-stained with CD34 Rabbit mAb (A25283, 2 $\mu\text{g}/\text{mL}$, orange line) or ABflo® 647 Rabbit IgG isotype control (A22070, 5 $\mu\text{l}/\text{Test}$, blue line), followed by Alexa Fluor® 647 conjugated goat anti-rabbit pAb staining. Non-fluorescently stained cells were used as blank control (red line).

Flow cytometry: 1×10^6 MOLT-4 cells were surface-stained with ABflo® 647 Rabbit IgG isotype control (A22070, 5 $\mu\text{l}/\text{Test}$, left) or CD34 Rabbit mAb (A25283, 2 $\mu\text{g}/\text{mL}$, right).