

ABflo® 647 Rabbit anti-Human MICA/MICB mAb

Catalog No.: A25277

Basic Information

Observed MW

Calculated MW

4kDa/31kDa/37kDa/43kDa

Category

Primary antibody

Applications

FC

Cross-Reactivity

Human

CloneNo number

ARC65920

Conjugate

ABflo® 647. Ex:648nm. Em:664nm.

Recommended Dilutions

FC 5 µl per 10⁶ cells in
100 µl volume

Background

This gene encodes a heavily glycosylated protein which is a ligand for the NKG2D type II receptor. Binding of the ligand activates the cytolytic response of natural killer (NK) cells, CD8 alpha beta T cells, and gamma delta T cells which express the receptor. This protein is stress-induced and is similar to MHC class I molecules; however, it does not associate with beta-2-microglobulin or bind peptides. Alternative splicing results in multiple transcript variants.

Immunogen Information

Gene ID

100507436/4277

Swiss Prot

Q29983/Q29980

Immunogen

Recombinant protein (or fragment). This information is considered to be commercially sensitive.

Synonyms

MIC-A; PERB11.1; PERB11.2; MICB

Contact

☎ | 400-999-6126

✉ | cn.market@abclonal.com.cn

🌐 | www.abclonal.com.cn

Product Information

Source

Rabbit

Isotype

IgG

Purification

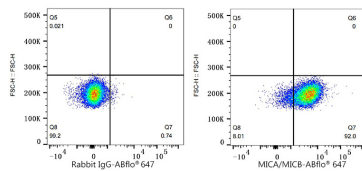
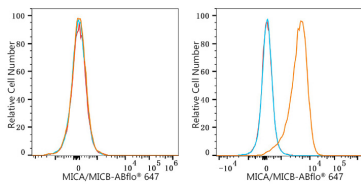
Affinity purification

Storage

Store at 2-8°C. Avoid freeze.

Buffer: PBS containing 0.2% BSA, preserved with proclin300 or sodium azide (as specified on the Certificate of Analysis), pH 7.3.

Validation Data



Flow cytometry: 1×10^6 SH-SY5Y cells (negative control, left) and K-562 cells (right) were surface-stained with ABflo® 647 Rabbit anti-Human MICA/MICB mAb (A25277, 5 μ l/Test, orange line) or ABflo® 647 Rabbit IgG isotype control (A22070, 5 μ l/Test, blue line). Non-fluorescently stained cells were used as blank control (red line).

Flow cytometry: 1×10^6 K-562 cells were surface-stained with ABflo® 647 Rabbit IgG isotype control (A22070, 5 μ l/Test, left) or ABflo® 647 Rabbit anti-Human MICA/MICB mAb (A25277, 5 μ l/Test, right).