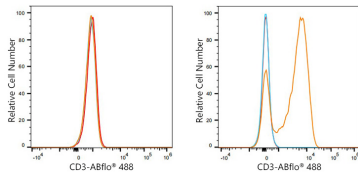




## Validation Data

---



Flow cytometry:  $1 \times 10^6$  Raji cells (negative control, left) and Human PBMC (right) were surface-stained with ABflo® 488 Mouse anti-Human CD3 mAb (A25188, 5  $\mu$ l/Test, orange line) or ABflo® 488 Mouse IgG 2a isotype control (A25261, 5  $\mu$ l/Test, blue line). Non-fluorescently stained cells were used as blank control (red line).