

KYAT3 Rabbit pAb

Catalog No.: A25254

Basic Information

Observed MW

Refer to figures

Calculated MW

51kDa

Category

Primary antibody

Applications

IHC-P,IF/ICC,ELISA

Cross-Reactivity

Human, Mouse

Background

This gene encodes an aminotransferase that transaminates kynurenine to form kynurenic acid, which is a metabolite of tryptophan. Multiple alternatively spliced transcript variants that encode different proteins have been described for this gene. This gene shares 5' exon structure with the RNA binding motif protein, X-linked-like 1 locus on chromosome 1, but the coding sequences are non-overlapping.

Recommended Dilutions

IHC-P 1:50 - 1:200

IF/ICC 1:100 - 1:500

ELISA Recommended starting concentration is 1 µg/mL. Please optimize the concentration based on your specific assay requirements.

Immunogen Information

Gene ID

56267

Swiss Prot

Q6YP21

Immunogen

Synthetic peptide. This information is considered to be commercially sensitive.

Synonyms

KAT3; CCBL2; KATIII

Contact

 | 400-999-6126

 | cn.market@abclonal.com.cn

 | www.abclonal.com.cn

Product Information

Source

Rabbit

Isotype

IgG

Purification

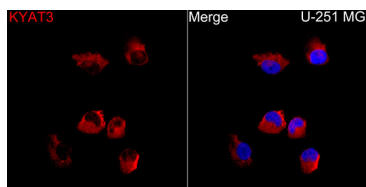
Affinity purification

Storage

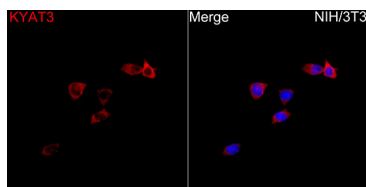
Store at -20°C. Avoid freeze / thaw cycles.

Buffer: PBS with 0.05% proclin300,50% glycerol,pH7.3.

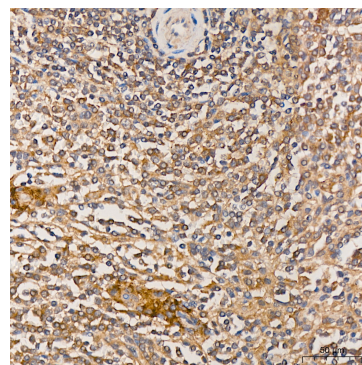
Validation Data



Immunofluorescence analysis of U-251 MG cells using KYAT3 Rabbit pAb (A25254) at a dilution of 1:200 (40x lens). Secondary antibody: Cy3-conjugated Goat anti-Rabbit IgG (H+L) (AS007) at 1:500 dilution. Blue: DAPI for nuclear staining.



Immunofluorescence analysis of NIH/3T3 cells using KYAT3 Rabbit pAb (A25254) at a dilution of 1:200 (40x lens). Secondary antibody: Cy3-conjugated Goat anti-Rabbit IgG (H+L) (AS007) at 1:500 dilution. Blue: DAPI for nuclear staining.



Immunohistochemistry analysis of paraffin-embedded Human spleen tissue using KYAT3 Rabbit pAb (A25254) at a dilution of 1:200 (40x lens). High pressure antigen retrieval was performed with 0.01 M citrate buffer (pH 6.0) prior to IHC staining.